

100

L. Sery

Tango Bulesco

Partitura de Orquesta

All. Mod.

2 Flautas

2 Oboes

2 Clarinetas Sib.

2 Fagotes

4 Trompas em Fa

2 Pistões Sib.

3 Trombones

Triângulo
Tambor
Bateria

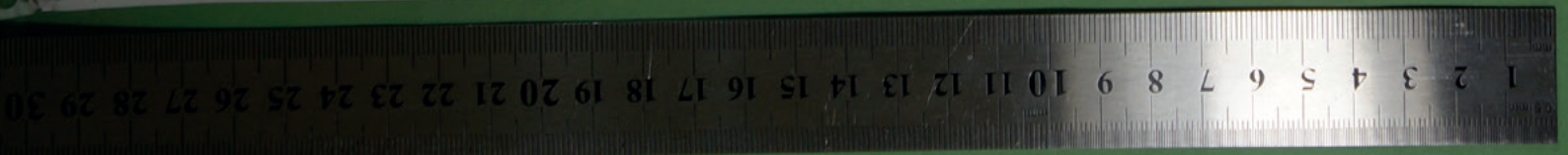
Tímpanos

Violinas 1^a

Violinas 2^a

Violoncelos

Contrabaixos



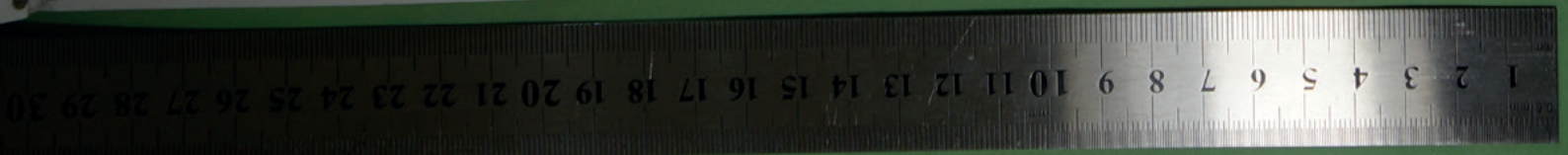
A

Handwritten musical score for woodwinds and percussion. The staves are labeled on the left: fl., dr., cl., fag., Corni, Rit., Tamb., and timp. The score includes various musical notations such as notes, rests, and dynamic markings. Key annotations include *dolce*, *mf*, *p*, *sordina*, and *tambor p*. A boxed 'A' is present at the top of the page.

A

Handwritten musical score for strings. The score includes various musical notations such as notes, rests, and dynamic markings. Key annotations include *arco*, *divisi*, *p*, and *mf*. A boxed 'A' is present at the bottom of the page.

A



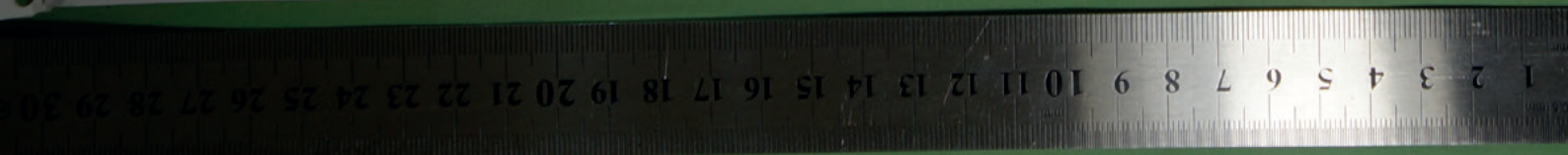
B *mf*

Handwritten musical score for percussion instruments. The staves are labeled on the left as follows: fl., d., foy, Gm, Piat, Tamb, trmb., and timp. The notation includes various rhythmic patterns, dynamic markings such as *mf*, *p*, and *mp*, and articulation marks. A boxed letter **B** is placed above the first staff at the beginning of the section.

B

Handwritten musical score for piano accompaniment. The notation is written in a grand staff format. It includes dynamic markings such as *subtollato*, *parallelato*, *mf*, and *f*. The music features complex rhythmic patterns and melodic lines.

B



Scherzando

Handwritten musical score for woodwinds and strings. The staves are labeled on the left as follows: fl., ob., cl., fag., Corn., Post., Tromb., Tamb., and Trupf. The notation includes various notes, rests, and dynamic markings such as *p*, *mf*, and *f*. The music is written in a single system across these staves.

Handwritten musical score for piano accompaniment. It consists of four staves of music, likely representing the right and left hands of a piano. The notation includes chords, arpeggios, and melodic lines.

Handwritten musical score for a symphony orchestra. The score is written on ten staves, with the following instruments labeled on the left:

- fl. (Flute)
- ob. (Oboe)
- cl. (Clarinet)
- fg. (Fagott / Bassoon)
- corni (Corni)
- trpt. (Trumpet)
- troub. (Trombone)
- trab. (Tuba)
- tim. (Timpani)
- Violin I
- Violin II
- Viola
- Cello
- Double Bass

The score includes various musical notations such as notes, rests, and dynamic markings. A handwritten 'a2' is visible at the top left, and 'pian' is written in several places. The bottom of the page features a ruler with centimeter markings from 1 to 29.

E

F

Handwritten musical score for woodwinds and percussion. The staves are labeled on the left: fl., cl., d., fgs., con., pite., trmb., tamb., and timpani. The music includes various dynamics such as *mf*, *pp*, *p*, and *f*. A *Solo* marking is present above the clarinet staff. The percussion parts include *marcato, misurato* and *mf* markings.

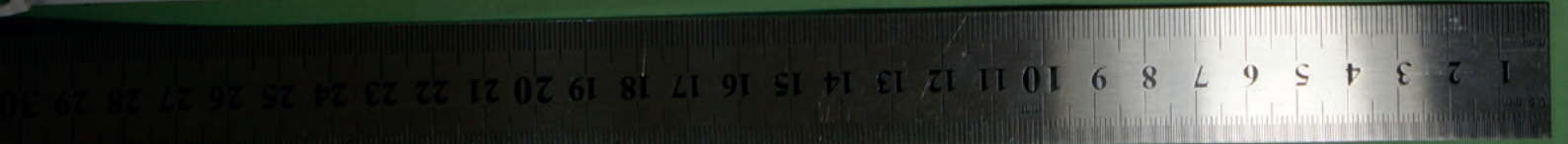
E

F

Handwritten musical score for strings. The staves are labeled on the left: *pizz* and *arco*. The music includes dynamics such as *p*, *mf*, and *f*. The *arco* section includes markings for *arco*, *pizz.*, and *arco mf*.

E

F

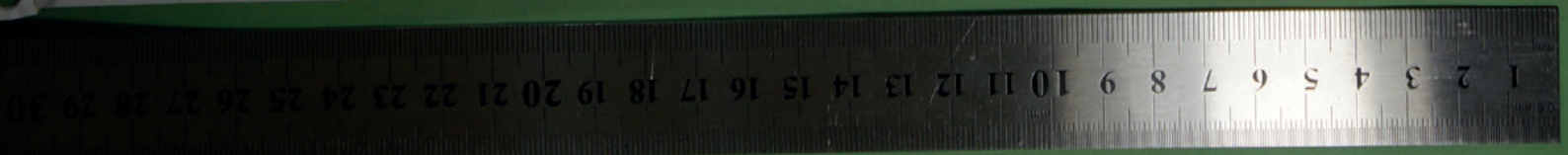


Handwritten musical score for a symphony orchestra, page 8. The score is written on ten staves, with the following instruments labeled on the left:

- Flute (fl.)**: Top staff, featuring complex rhythmic patterns and dynamic markings like *f* and *trium*.
- Oboe (ob.)**: Second staff, with melodic lines and dynamic markings like *f* and *pu*.
- Clarinet (cl.)**: Third staff, with melodic lines and dynamic markings like *f*.
- Bassoon (fag.)**: Fourth staff, with melodic lines and dynamic markings like *f*.
- Cor Anglais (cor.)**: Fifth staff, with melodic lines and dynamic markings like *mf*.
- Trumpet (tr.)**: Sixth staff, with melodic lines and dynamic markings like *f*.
- Trombone (tr.)**: Seventh staff, with melodic lines and dynamic markings like *mf* and *f*.
- Tuba (tuba)**: Eighth staff, with melodic lines and dynamic markings like *f*.
- Timpani (timpani)**: Ninth staff, with rhythmic patterns and dynamic markings like *mf* and *f*.
- Violins (arco)**: Tenth and eleventh staves, with melodic lines and dynamic markings like *p* and *rit*.
- Violas (arco)**: Twelfth and thirteenth staves, with melodic lines and dynamic markings like *p* and *rit*.
- Cello (arco)**: Fourteenth staff, with melodic lines and dynamic markings like *p* and *rit*.
- Double Bass (arco)**: Fifteenth staff, with melodic lines and dynamic markings like *p* and *rit*.

Key features of the score include:

- Dynamic markings**: *f* (forte), *mf* (mezzo-forte), *p* (piano), *rit* (ritardando).
- Performance instructions**: *trium*, *pu*, *rit*, *ritardando*, *marcato*, *ritardando*.
- Sectional markers**: Three boxes containing the letter 'G' are placed at the end of the first, fifth, and thirteenth staves.
- Handwritten notes**: Various annotations and corrections are scattered throughout the score.



Sol
mf

fl.
cl.
py.
con.
pit.
trmb.
trmb.
trpy.

Handwritten musical score for a woodwind and string ensemble. The score is written on ten staves. The top five staves are for woodwinds: Flute (fl.), Clarinet (cl.), Piccolo (py.), Concertina (con.), and Piano (pit.). The bottom five staves are for strings: Trombone (trmb.), Trumpet (trpy.), and three other staves. The music is in a key with one sharp (F#) and a common time signature. It features complex rhythmic patterns, including sixteenth and thirty-second notes, and dynamic markings such as 'p' (piano) and 'mf' (mezzo-forte). There are several boxed-in sections, likely indicating specific rehearsal points or structural markers. The notation includes various articulations, slurs, and phrasing marks.

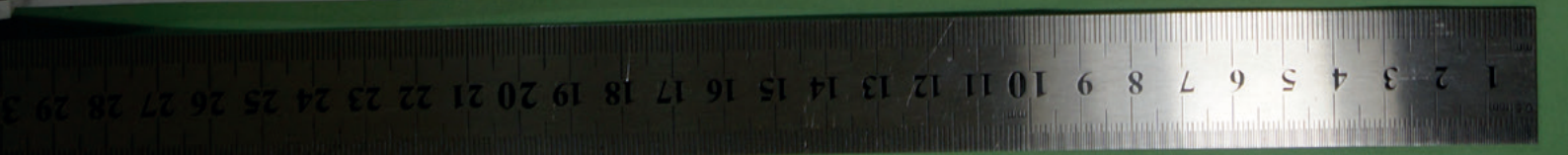
Handwritten musical score for woodwinds. The staves are labeled on the left as fl., ob., cl., and bsn. The notation includes various notes, rests, and dynamic markings such as *mf*, *ff*, and *dolce*. There are also some handwritten annotations and a signature in the top right corner.

A section of the musical score consisting of several empty staves, likely representing a rest or a section where the instruments are silent.

Handwritten musical score for strings. The notation includes various notes, rests, and dynamic markings such as *mf* and *ff*. The staves are arranged in a group, with some staves containing more complex rhythmic patterns.

A section of the musical score consisting of several empty staves, likely representing a rest or a section where the instruments are silent.

Handwritten musical score for a brass band, featuring multiple staves for different instruments. The score includes dynamic markings such as *pp*, *mf*, and *ff*, and tempo markings like *meno mosso* and *piu mosso*. The music is written in a key signature of one sharp (F#) and a 2/4 time signature. The score is divided into sections by square brackets containing the number 1. The instruments listed on the left are: fl. (flute), cl. (clarinet), fgy. (flugelhorn), corn. (cornet), pist. (piston), tromb. (trombone), trpt. (trumpet), and tymb. (tympani). The notation includes various rhythmic patterns, including sixteenth and thirty-second notes, and rests.



Handwritten musical score for a percussion ensemble. The score is written on ten staves, with the following instruments labeled on the left:

- fl.
- dr.
- cl.
- py.
- con.
- hrt.
- trmb.
- trmb.
- trp.

The score includes various musical notations such as notes, rests, and dynamic markings. Key markings include:

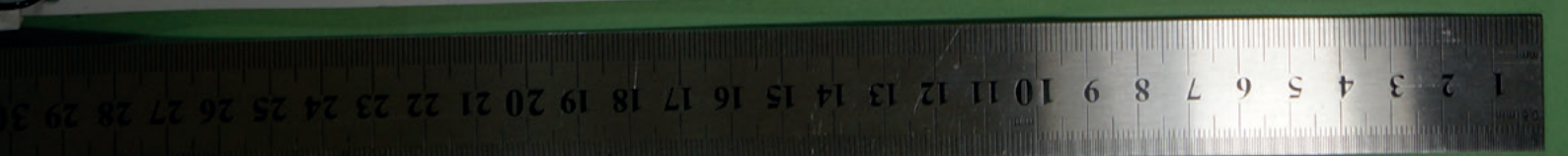
- a2* (twice)
- mf* (twice)
- f* (twice)
- rit* (twice)
- piu mos* (twice)
- mf* (once)
- f* (once)
- rit* (once)
- mf* (once)

There are three boxed 'J' symbols placed at the end of the first, eighth, and ninth staves. The notation is dense, particularly in the first four staves, with many notes and rests. The bottom two staves appear to be a grand staff with multiple voices.

Handwritten musical score on a spiral-bound notebook page. The score is written on ten staves, with various instruments and dynamics indicated.

Staff 1: Flute (fl), marked *Poco meno* and *rall*.
Staff 2: Oboe (ob), marked *p*.
Staff 3: Clarinet (cl), marked *p*.
Staff 4: Bassoon (fg), marked *p*.
Staff 5: Horns (corn), marked *p*.
Staff 6: Trumpets (trump), marked *p*.
Staff 7: Trombones (tromb), marked *p*.
Staff 8: Percussion (perc), marked *p*.
Staff 9: Double Bass (db), marked *p*.
Staff 10: Piano (p), marked *p*.

Key markings and dynamics include: *Poco meno*, *rall*, *Meno*, *p*, *pp*, *rit*, *triumphant*, *dir*, and *pizz*.



Handwritten musical score on a spiral-bound notebook page. The score consists of approximately 12 staves. The top two staves contain a melodic line with various notes and rests. The lower staves contain a more complex accompaniment with many beamed notes and rests. Handwritten annotations include "Spalla Solo con..." and "divi".

K

Handwritten musical score for Flute (fl), Oboe (ob), Clarinet (cl), and Bassoon (bs). The score consists of four staves. The first staff is for Flute, the second for Oboe, the third for Clarinet, and the fourth for Bassoon. The music is written in a key signature of one sharp (F#) and a common time signature (C). The notation includes various rhythmic values, slurs, and dynamic markings such as *f* (forte) and *p* (piano). There are some corrections and scribbles in the upper right corner of the page.

K

Handwritten musical score for Violin (vln) and Viola (vcl). The score consists of two staves. The top staff is for Violin and the bottom staff is for Viola. The music is written in a key signature of one sharp (F#) and a common time signature (C). The notation includes various rhythmic values, slurs, and dynamic markings such as *f* (forte) and *p* (piano). Specific performance instructions are written above the staves: *divisi* (divided) above the violin staff, *pizz* (pizzicato) above the viola staff, and *arco* (arco) above the violin staff. There are also some corrections and scribbles in the upper right corner of the page.

K

Handwritten musical score for Cello (cel) and Double Bass (db). The score consists of two staves. The top staff is for Cello and the bottom staff is for Double Bass. The music is written in a key signature of one sharp (F#) and a common time signature (C). The notation includes various rhythmic values, slurs, and dynamic markings such as *f* (forte) and *p* (piano). The instruction *f pizz* (forte pizzicato) is written below the double bass staff.

Handwritten musical score for a brass and woodwind ensemble. The score is written on ten staves. The instruments are labeled on the left side: fl. (flute), ob. (oboe), cl. (clarinet), Corneo (Corneo), Fagotto (Fagotto), Piston (Piston), Tromba (Tromba), and Piano (Piano). The score includes various musical notations such as notes, rests, and dynamic markings. Key markings include *p* (piano), *rit.* (ritardando), and *rall.* (rallentando). The score is divided into measures by vertical bar lines. The bottom of the page features a ruler with a scale from 1 to 30.

Handwritten musical score on a spiral-bound notebook page. The score is written on ten staves, with various instruments and dynamics indicated.

Staff 1: Flute (fl.) with a boxed-in section at the beginning. Dynamics include *mf* and *f*.

Staff 2: Trumpet (tr.) with dynamics *mf* and *f*. Includes the instruction *rall.*

Staff 3: Trombone (tb.) with dynamics *mf* and *f*. Includes the instruction *rall.*

Staff 4: Clarinet (cl.) with dynamics *mf* and *f*. Includes the instruction *rall.*

Staff 5: Bassoon (b.) with dynamics *mf* and *f*. Includes the instruction *rall.*

Staff 6: Bassoon (b.) with dynamics *mf* and *f*. Includes the instruction *rall.*

Staff 7: Trumpet (tr.) with dynamics *mf* and *f*. Includes the instruction *rall.*

Staff 8: Trombone (tb.) with dynamics *mf* and *f*. Includes the instruction *rall.*

Staff 9: Violin (v.) with dynamics *mf* and *f*. Includes the instruction *arco*.

Staff 10: Violin (v.) with dynamics *mf* and *f*. Includes the instruction *arco*.

Staff 11: Violin (v.) with dynamics *mf* and *f*. Includes the instruction *arco*.

Staff 12: Violin (v.) with dynamics *mf* and *f*. Includes the instruction *arco*.

Staff 13: Violin (v.) with dynamics *mf* and *f*. Includes the instruction *arco*.

Staff 14: Violin (v.) with dynamics *mf* and *f*. Includes the instruction *arco*.

Staff 15: Violin (v.) with dynamics *mf* and *f*. Includes the instruction *arco*.

Staff 16: Violin (v.) with dynamics *mf* and *f*. Includes the instruction *arco*.

Staff 17: Violin (v.) with dynamics *mf* and *f*. Includes the instruction *arco*.

Staff 18: Violin (v.) with dynamics *mf* and *f*. Includes the instruction *arco*.

Staff 19: Violin (v.) with dynamics *mf* and *f*. Includes the instruction *arco*.

Staff 20: Violin (v.) with dynamics *mf* and *f*. Includes the instruction *arco*.

Staff 21: Violin (v.) with dynamics *mf* and *f*. Includes the instruction *arco*.

Staff 22: Violin (v.) with dynamics *mf* and *f*. Includes the instruction *arco*.

Staff 23: Violin (v.) with dynamics *mf* and *f*. Includes the instruction *arco*.

Staff 24: Violin (v.) with dynamics *mf* and *f*. Includes the instruction *arco*.

Staff 25: Violin (v.) with dynamics *mf* and *f*. Includes the instruction *arco*.

Staff 26: Violin (v.) with dynamics *mf* and *f*. Includes the instruction *arco*.

Staff 27: Violin (v.) with dynamics *mf* and *f*. Includes the instruction *arco*.

Staff 28: Violin (v.) with dynamics *mf* and *f*. Includes the instruction *arco*.

Staff 29: Violin (v.) with dynamics *mf* and *f*. Includes the instruction *arco*.

Staff 30: Violin (v.) with dynamics *mf* and *f*. Includes the instruction *arco*.

M

Handwritten musical score for a symphony orchestra. The score is written on ten staves, each labeled with an instrument: fl. (flute), ob. (oboe), cl. (clarinet), fag. (bassoon), corn. (horn), prt. (trumpet), tromb. (trombone), timp. (timpani), and a grand staff (piano/violin). The music is in a key with one sharp (F#) and a common time signature (C). The score includes various musical notations such as notes, rests, beams, and slurs. Dynamic markings include *f* (forte), *mf* (mezzo-forte), and *ff* (fortissimo). There are three boxed 'M' markings: one at the top right, one in the timpani staff, and one at the bottom center. The word 'mis' is written in the piano/violin staff. The score is on a page from a spiral-bound notebook, with a ruler visible at the bottom.

N

Handwritten musical score for percussion instruments. The staves are labeled on the left as follows: fl (flute), s (saxophone), cl (clarinet), pg (piano/guitar), con (conga), hit (hi-hat), tom1 (tom-tom 1), tom2 (tom-tom 2), and tom3 (tom-tom 3). The notation includes various rhythmic patterns, notes, and rests. A dynamic marking of *mf* (mezzo-forte) is present in the saxophone part. A *10 solo* marking is also visible. The score is written in a 4/4 time signature.

N

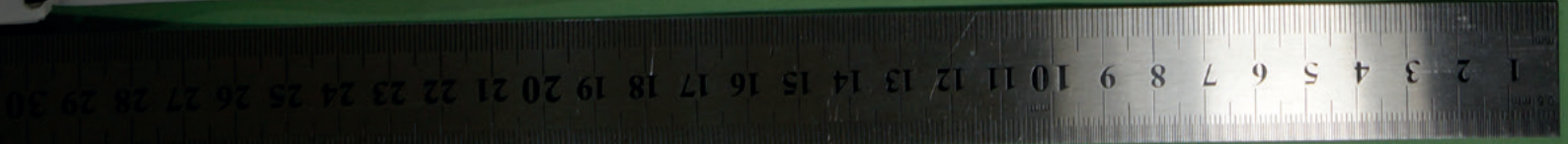
Handwritten musical score for strings. The staves are labeled on the left as *violin* and *viola*. The notation includes notes, rests, and dynamic markings such as *mp* (mezzo-piano) and *p* (piano). The score is written in a 4/4 time signature.

N



Tempo 1^o

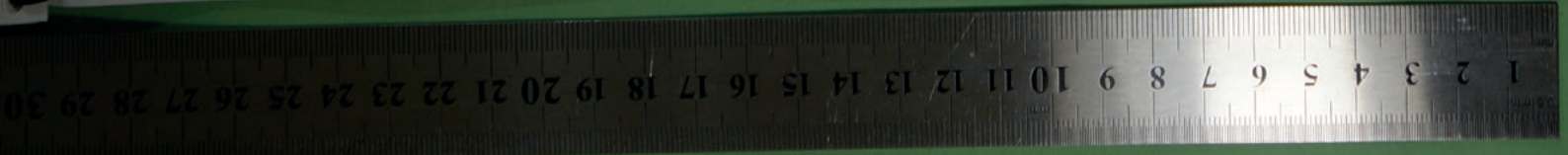
A handwritten musical score on ten staves. The top staff is marked with a piano (*p*) dynamic and contains complex rhythmic patterns. The second staff is marked with a forte (*f*) dynamic. The third staff is marked with a piano (*p*) dynamic. The fourth staff is marked with a piano (*p*) dynamic. The fifth staff is marked with a piano (*p*) dynamic. The sixth staff is marked with a piano (*p*) dynamic. The seventh staff is marked with a piano (*p*) dynamic. The eighth staff is marked with a piano (*p*) dynamic. The ninth staff is marked with a piano (*p*) dynamic. The tenth staff is marked with a piano (*p*) dynamic. The score includes various musical notations such as notes, rests, and dynamic markings. The word "arco" is written above the eighth, ninth, and tenth staves. The word "pizz." is written below the tenth staff. The score is written in a cursive, handwritten style.



Handwritten musical score for a symphony orchestra. The score is written on multiple staves, each labeled with an instrument or section:

- fl. (flute)
- ob. (oboe)
- cl. (clarinet)
- for. (horn)
- con. (concertmaster)
- pit. (piano)
- trmb. (trumpet)
- timp. (timpani)

The score includes various musical notations such as notes, rests, and dynamic markings like 'p' (piano) and 'pizz.' (pizzicato). There are also some boxed-in symbols, possibly indicating specific measures or sections. The notation is dense and covers the entire page.



Handwritten musical score for a symphony orchestra. The score is written on ten staves, with the following instruments labeled on the left:

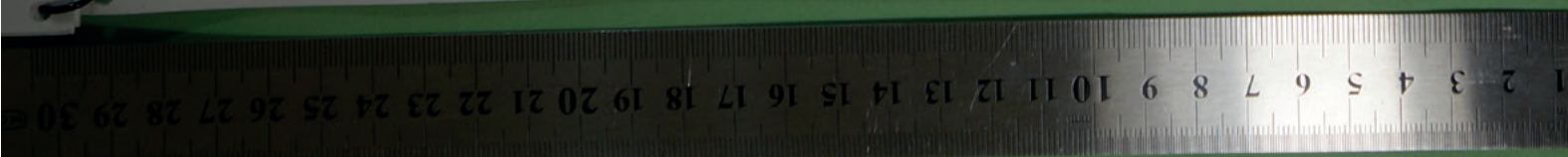
- fl.
- ob.
- cl.
- fgj.
- corn.
- pt.
- trub.
- trub.
- trub.
- trub.

The score includes various musical notations such as notes, rests, and dynamic markings. A boxed 'P' is present in the upper right corner of the first system. The bottom of the page features a ruler with markings from 1 to 29.

Handwritten musical score on ten staves. The staves are labeled on the left as follows: fl., dr., cl., fag., cor., pit., tramb., tramb., tramb., and timp. The score includes various musical notations such as notes, rests, and dynamic markings. Key markings include *mf* *a2* at the top, *psd.* in the pit. staff, and *p* in the tramb. and timp. staves. There are three boxed 'Q' symbols: one in the top right, one in the middle right, and one in the bottom right. The bottom of the page features a ruler with numbers 1 through 30.

Handwritten musical score for the first system, featuring staves for fl. (flute), ob. (oboe), cl. (clarinet), fgy. (fagotto), cor. (corni), frot. (frotto), truml. (tromba), truml. (tromba), and timp. (timpani). The score includes various musical notations such as notes, rests, and dynamic markings like *f* and *mf*. A boxed 'R' is present in the upper right corner of the system.

Handwritten musical score for the second system, continuing the orchestral arrangement. It includes staves for woodwinds and strings. The notation is dense with notes and rests. A boxed 'R' is present in the lower right corner of the system.



rull

A tempo
affet

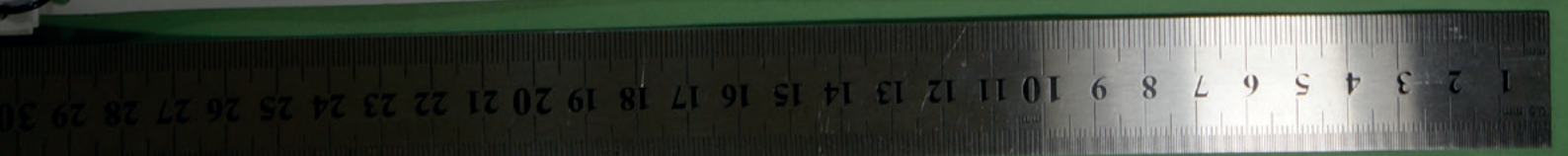
ar

arco molto

Handwritten musical score for percussion instruments. The staves are labeled on the left as follows: *fl*, *cl*, *fg.*, *corn*, *pit*, *trub*, *trub*, and *truf*. The notation includes various rhythmic patterns, rests, and dynamic markings such as *p* and *f*. The word *rull* is written above the *corn* and *pit* staves. The score is divided into measures by vertical bar lines.

Handwritten musical score for string instruments. The staves are labeled on the left as *violin*, *viola*, *cello*, and *double bass*. The notation includes *pizz.* (pizzicato) and *arco* (arco) markings. Dynamic markings include *mf* and *f*. The word *rull* is written above the *violin* staff. The score is divided into measures by vertical bar lines.

A tempo
affet



Handwritten musical score for a symphony orchestra, featuring staves for flutes (fl), oboes (ob), clarinets (cl), bassoons (fag), horns (corni), trumpets (trpt), trombones (trbn), and strings (str.). The score includes various musical notations such as notes, rests, and dynamic markings like *pizz*, *mf*, and *p*. A large 'X' is drawn over the right side of the page, and a double bar line is present near the end of the score.

Paris 1906
St. Pauls 1900

