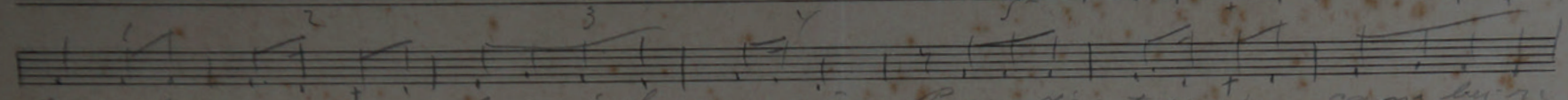
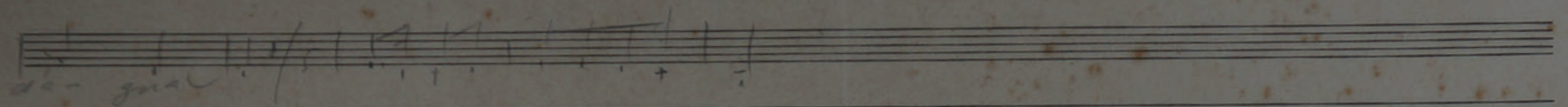


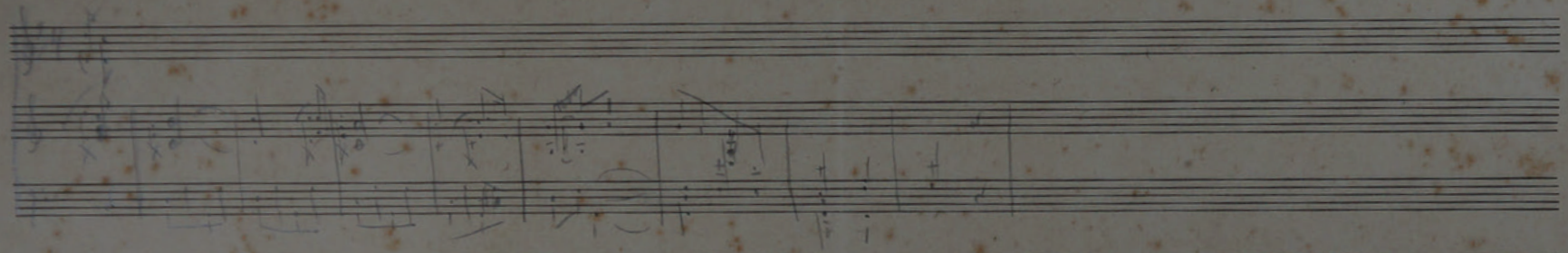
Al gran do po quito e con



ti quando se guo uo e con uo. ti e minha ma-gô. Parece o di in terra a per co no lu-ri



da-gua



A page of blank musical manuscript paper with 18 horizontal staves. The paper is aged and shows some foxing. The staves are evenly spaced and run across the width of the page.

W. H. WOOD
NEW YORK
ESTD 1852

A page of blank musical manuscript paper with 18 horizontal staves, partially visible on the right edge of the image. The paper is aged and shows some foxing.

