

A minha filha Rudina

"Valsa Brilhante"

Piano

Luiz Levy

op. 30

Handwritten title or text at the top of the page, possibly "Lied" or similar.

The page contains 12 horizontal musical staves, each consisting of five lines. The staves are arranged vertically down the page, with some faint handwritten markings and stains visible on the paper. The paper is aged and yellowed, with some brown spots and smudges. The staves are empty, with no notes or clefs written on them.

A minha filha
Cecilia

Valsa Brillhante"

(Vib.)

Luis Perez
op. 30.

8/4

Vivo.
Tritad.

leggiero

rit. - rall. - rit. - rall.

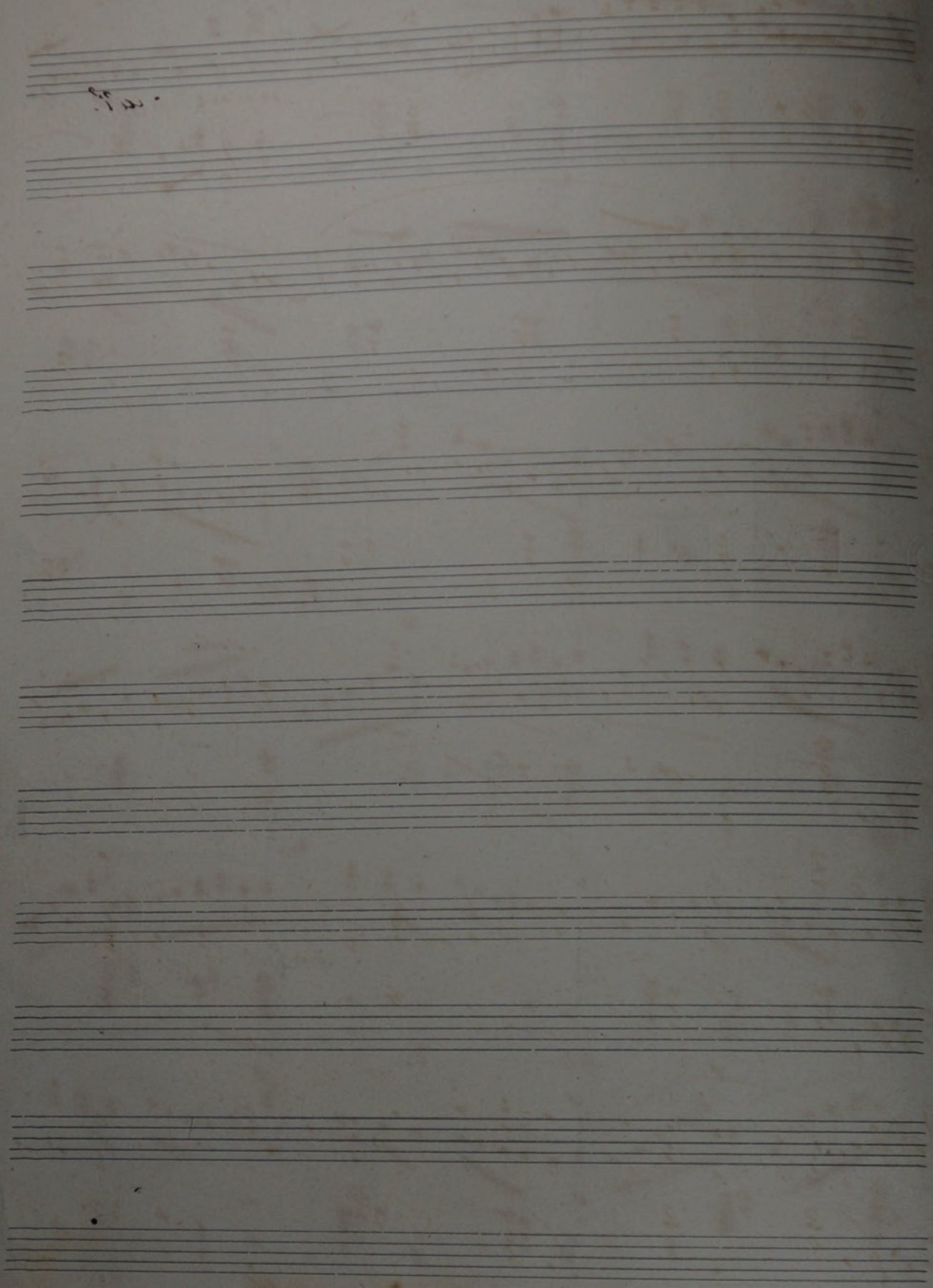
cresc.

rall.

Valse.

rall.

This image shows a handwritten musical score on a single page, numbered '2' at the top center. The score is arranged in six systems, each consisting of two staves. The upper staff of each system is written in a treble clef, and the lower staff is in a bass clef. The music is written in a key signature of two flats (B-flat and E-flat). The notation includes various note values, including eighth and sixteenth notes, as well as rests. There are numerous accidentals (sharps and flats) throughout the piece. Dynamic markings such as 'p' (piano) and 'f' (forte) are present. The handwriting is fluid and characteristic of a composer's draft. The paper shows signs of age, with some staining and discoloration.



87A

Handwritten musical notation on a single staff system. The upper staff is in treble clef, and the lower staff is in bass clef. The music features a series of notes with stems pointing upwards, some with dots above them. A large slur covers the first two measures. The lower staff contains notes with stems pointing downwards. The word "crescer rall." is written above the second measure of the lower staff.

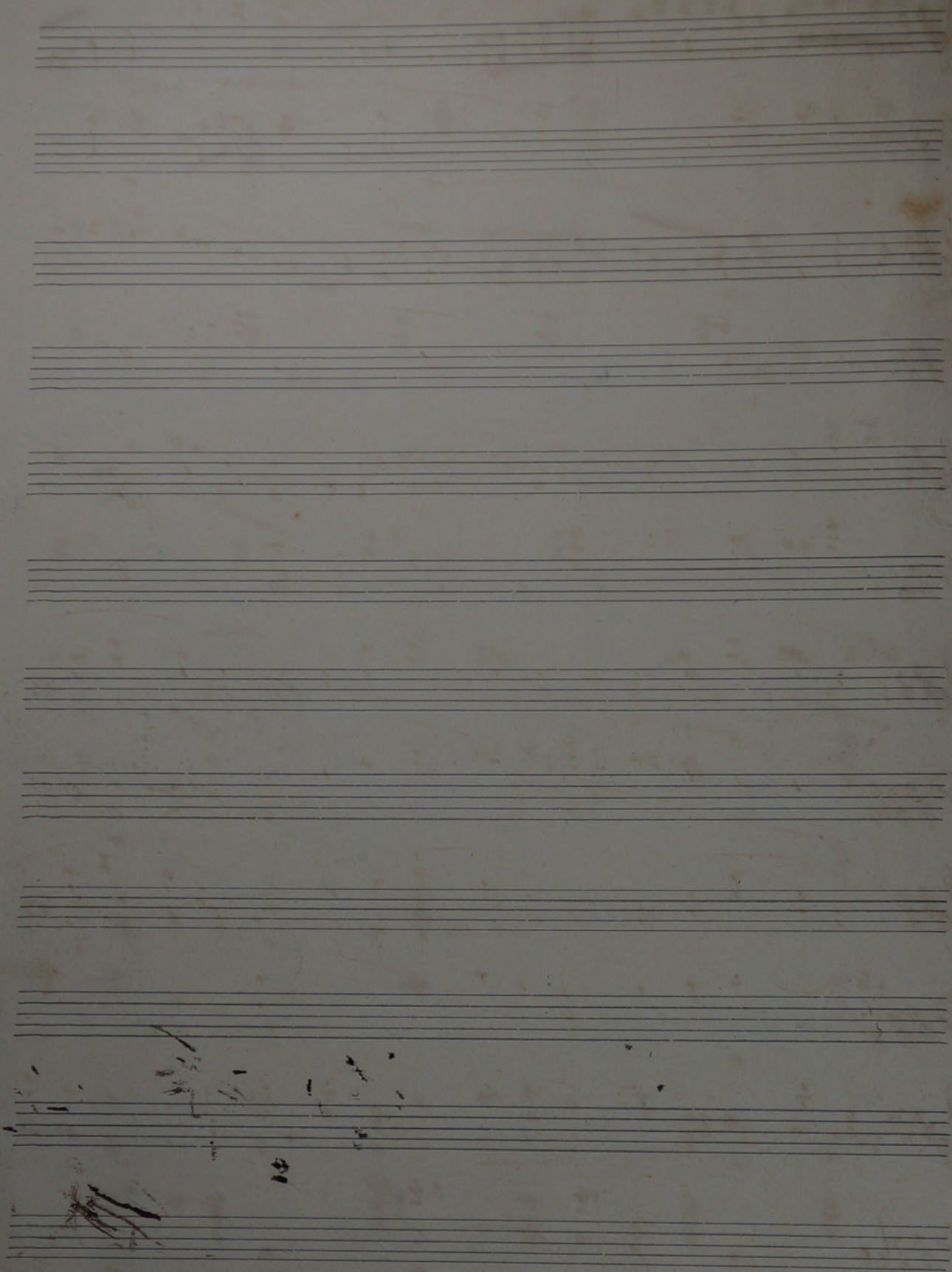
Handwritten musical notation on a single staff system. The upper staff is in treble clef, and the lower staff is in bass clef. The music continues with notes and stems, including some beamed eighth notes. A slur is present over the first two measures of the upper staff.

Handwritten musical notation on a single staff system. The upper staff is in treble clef, and the lower staff is in bass clef. The music features notes with stems pointing upwards and downwards. A slur is present over the first two measures of the upper staff.

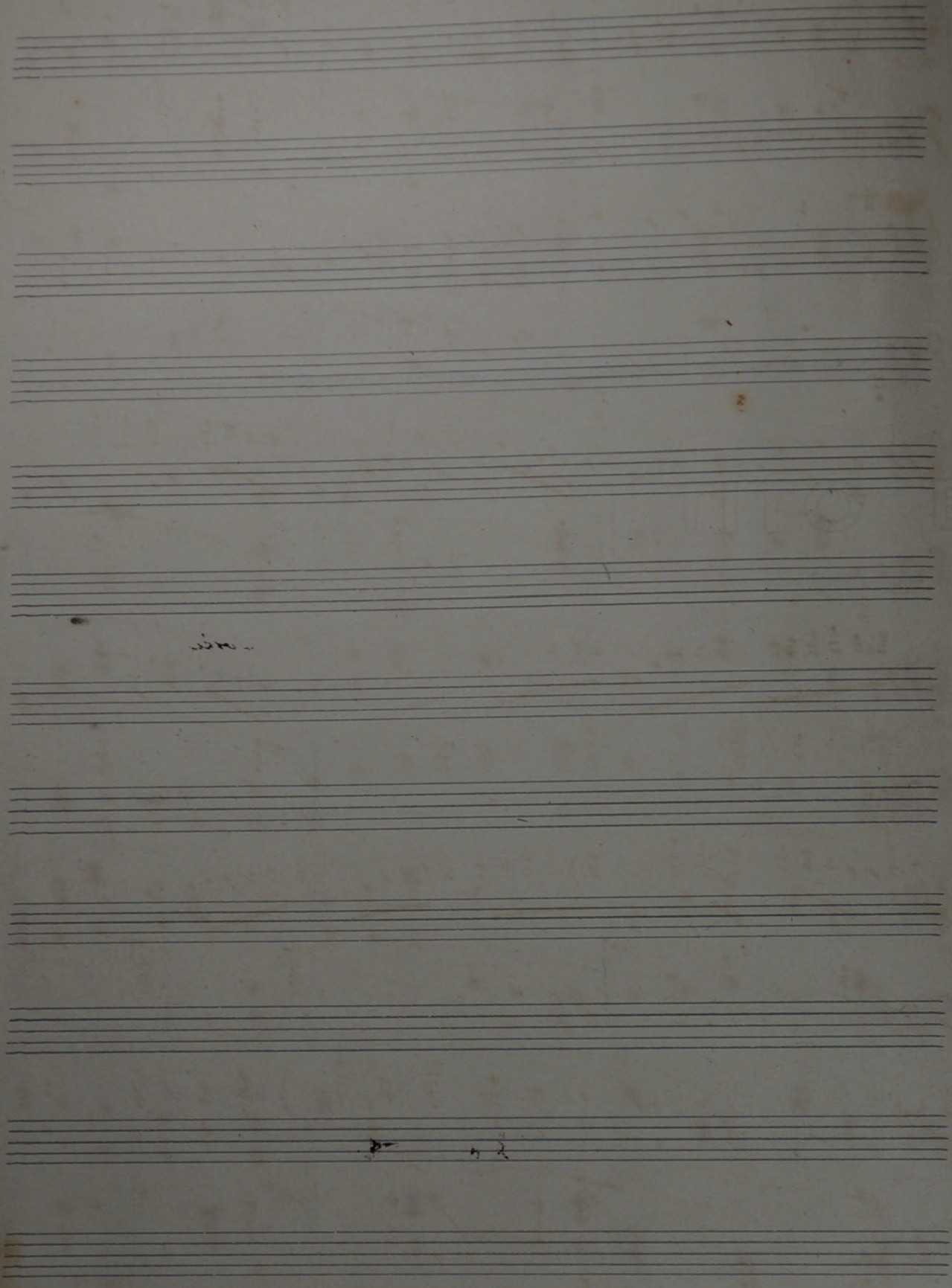
Handwritten musical notation on a single staff system. The upper staff is in treble clef, and the lower staff is in bass clef. The music includes notes with stems pointing upwards and downwards. The word "dolce" is written above the second measure of the upper staff.

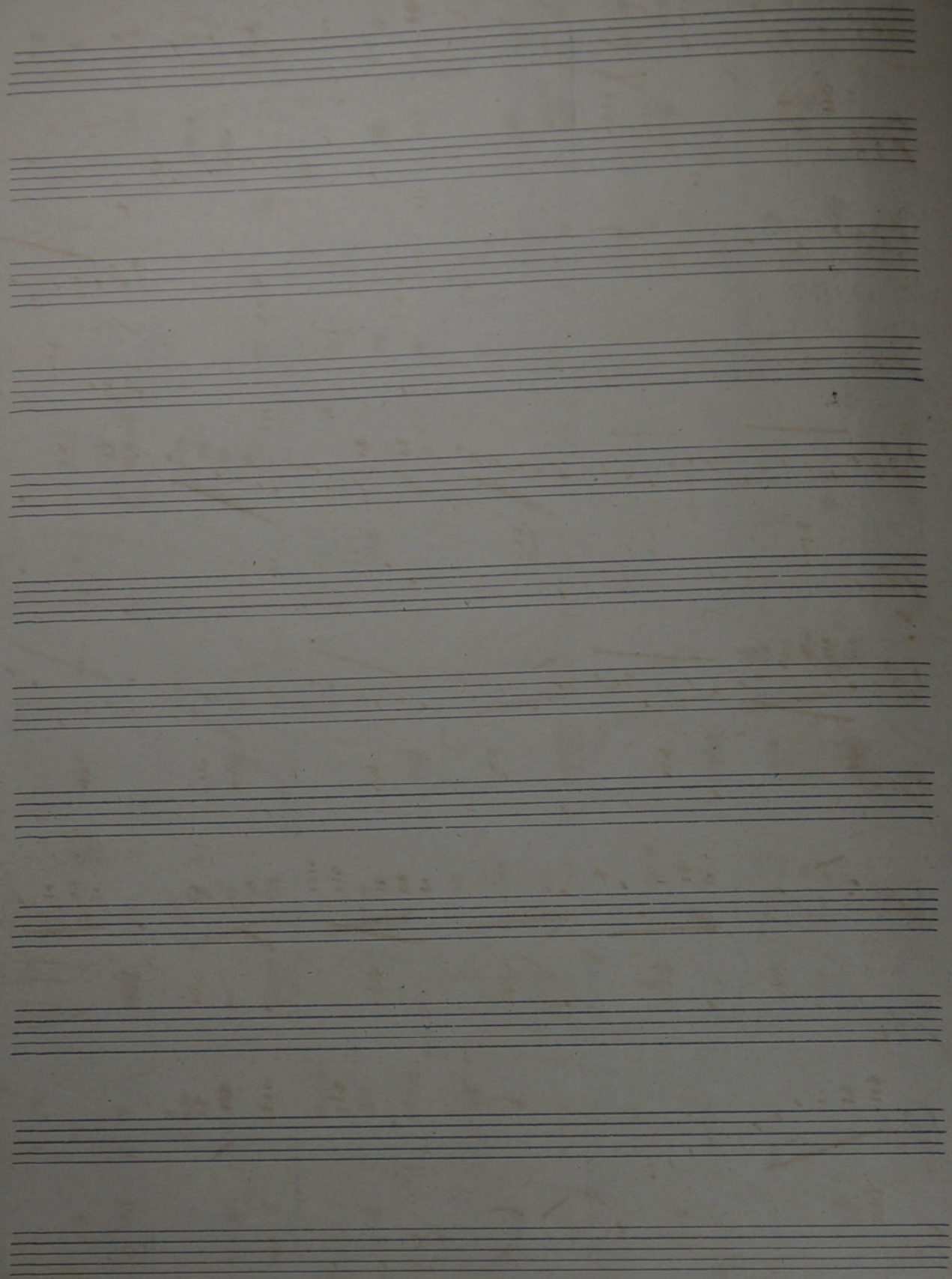
Handwritten musical notation on a single staff system. The upper staff is in treble clef, and the lower staff is in bass clef. The music features notes with stems pointing upwards and downwards. A slur is present over the first two measures of the upper staff.

Handwritten musical notation on a single staff system. The upper staff is in treble clef, and the lower staff is in bass clef. The music includes notes with stems pointing upwards and downwards. The word "rall." is written below the second measure of the lower staff.



This page contains a handwritten musical score for piano and violin, organized into seven systems. Each system consists of a treble clef staff (piano) and a bass clef staff (violin). The notation includes various musical symbols such as notes, rests, slurs, and dynamic markings. The key signature is B-flat major (two flats). The score features several slurs and ties, indicating long phrases. In the fourth system, the piano part has the instruction *p. e legato* written above it. In the seventh system, the piano part includes the marking *rall.* (rallentando). The handwriting is in dark ink on aged, slightly yellowed paper.





874

Handwritten musical notation on a grand staff. The upper staff contains a melodic line with various notes and rests. The lower staff contains a bass line with notes and rests. There are several large, hand-drawn circles or loops in the upper staff, possibly indicating specific musical phrases or structures.

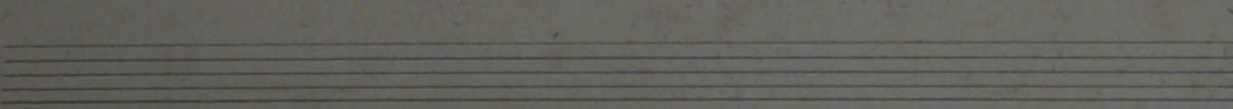
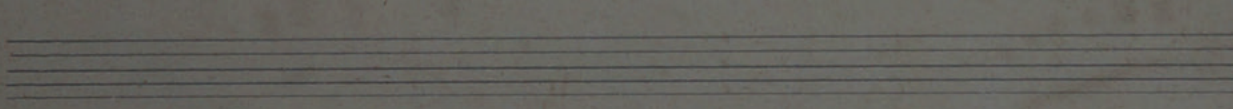
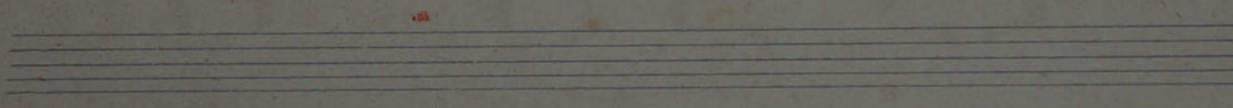
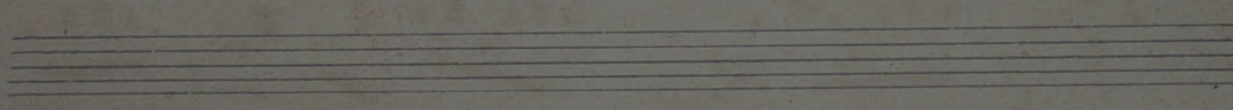
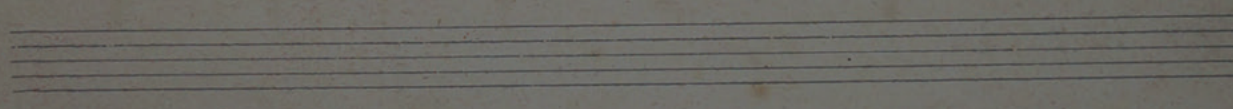
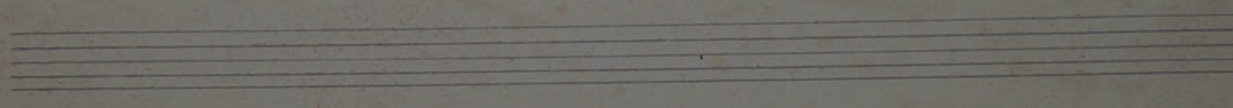
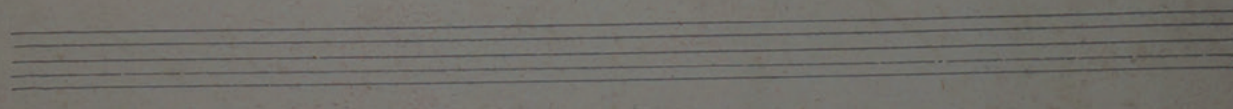
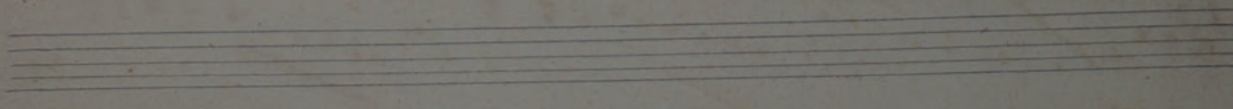
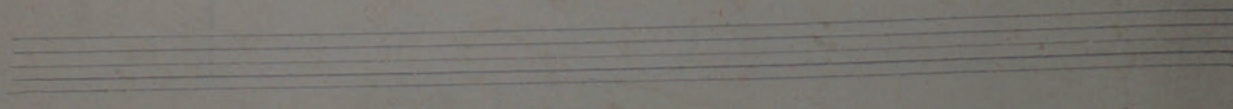
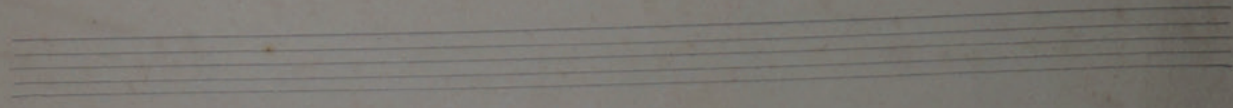
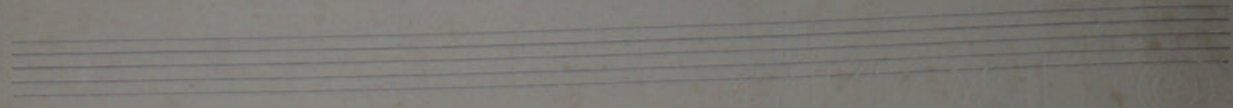
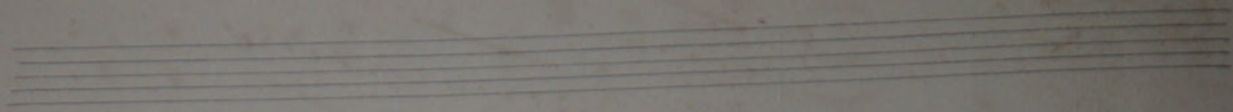
Handwritten musical notation on a grand staff. The upper staff features a melodic line with notes and rests. The lower staff contains a bass line. The notation includes various musical symbols such as slurs, ties, and dynamic markings.

Handwritten musical notation on a grand staff. The upper staff shows a melodic line with notes and rests. The lower staff contains a bass line. The notation includes various musical symbols such as slurs, ties, and dynamic markings.

Handwritten musical notation on a grand staff. The upper staff features a melodic line with notes and rests. The lower staff contains a bass line. The notation includes various musical symbols such as slurs, ties, and dynamic markings.

Handwritten musical notation on a grand staff. The upper staff shows a melodic line with notes and rests. The lower staff contains a bass line. The notation includes various musical symbols such as slurs, ties, and dynamic markings.

Handwritten musical notation on a grand staff. The upper staff features a melodic line with notes and rests. The lower staff contains a bass line. The notation includes various musical symbols such as slurs, ties, and dynamic markings.



Handwritten musical score for the first system, featuring multiple staves with complex notation, including slurs, accidentals, and dynamic markings like "ff" and "p".

subito a tempo al fine

Handwritten musical score for the second system, showing musical notation with large curved lines and dynamic markings such as "p" and "ff".

Handwritten musical score for the third system, concluding with the word "FINE" and a signature "Luiz Levy" dated "avril 1930".

