

4^e Valse Lente "Reverse"

L. Houri

Introduction

Musical notation for the introduction section, featuring a treble and bass staff with notes and rests.

Lentamente, sempre cantabile

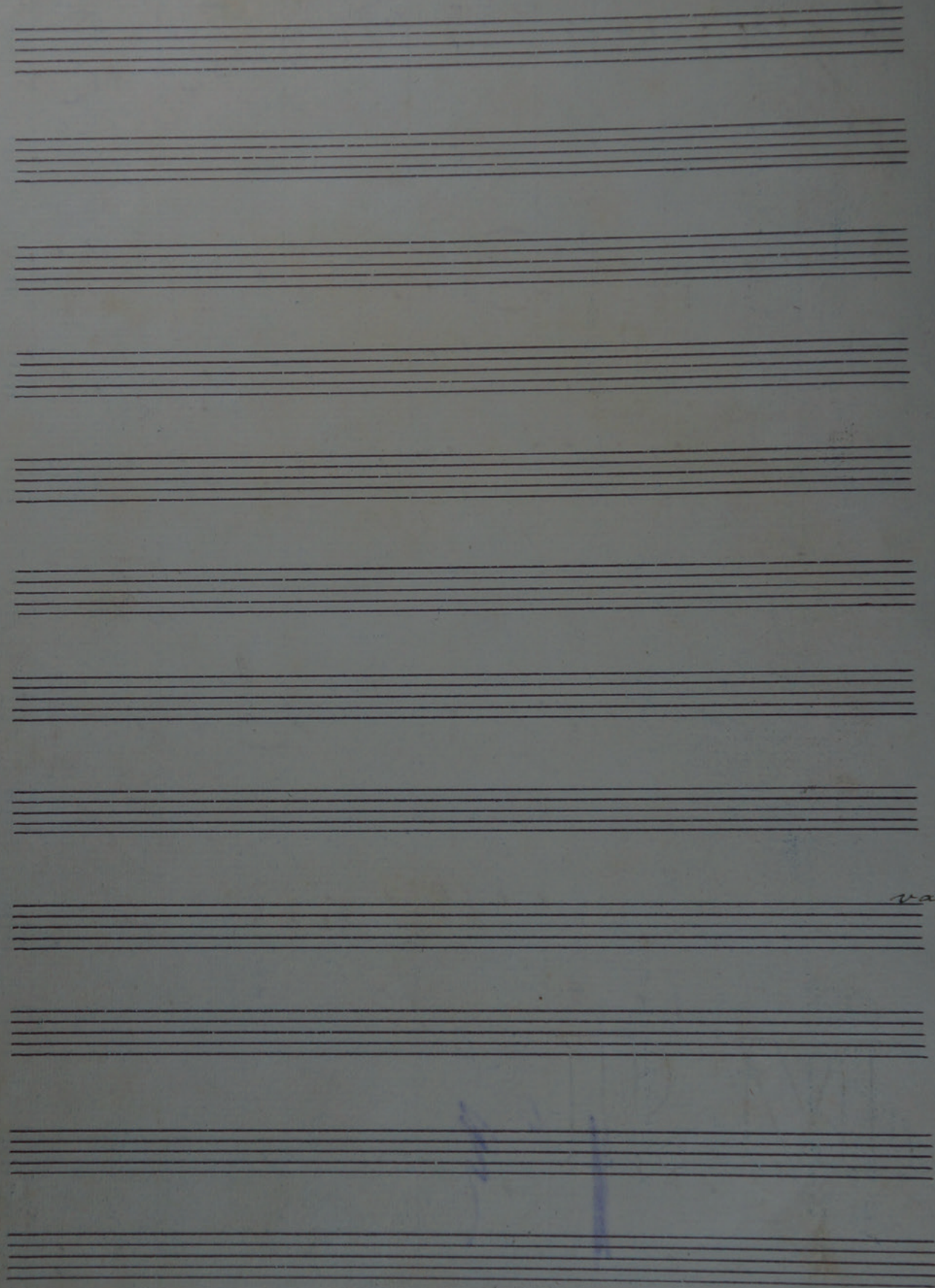
Musical notation for the first section, marked "Lentamente, sempre cantabile" and "p. sempre legato".

Musical notation for the second section, featuring a treble and bass staff with notes and rests.

Musical notation for the third section, marked "rall." and "p.". Includes a red number "3" written below the staff.

Musical notation for the fourth section, marked "accell.". Includes a red number "4" written below the staff.

Musical notation for the fifth section, marked "accell.". Includes a red number "5" written below the staff.



repi
se
cu
no
val a

Handwritten musical notation on a grand staff (treble and bass clefs). The music features a complex melodic line in the treble clef and a more rhythmic accompaniment in the bass clef. There are several accidentals (sharps and naturals) and dynamic markings.

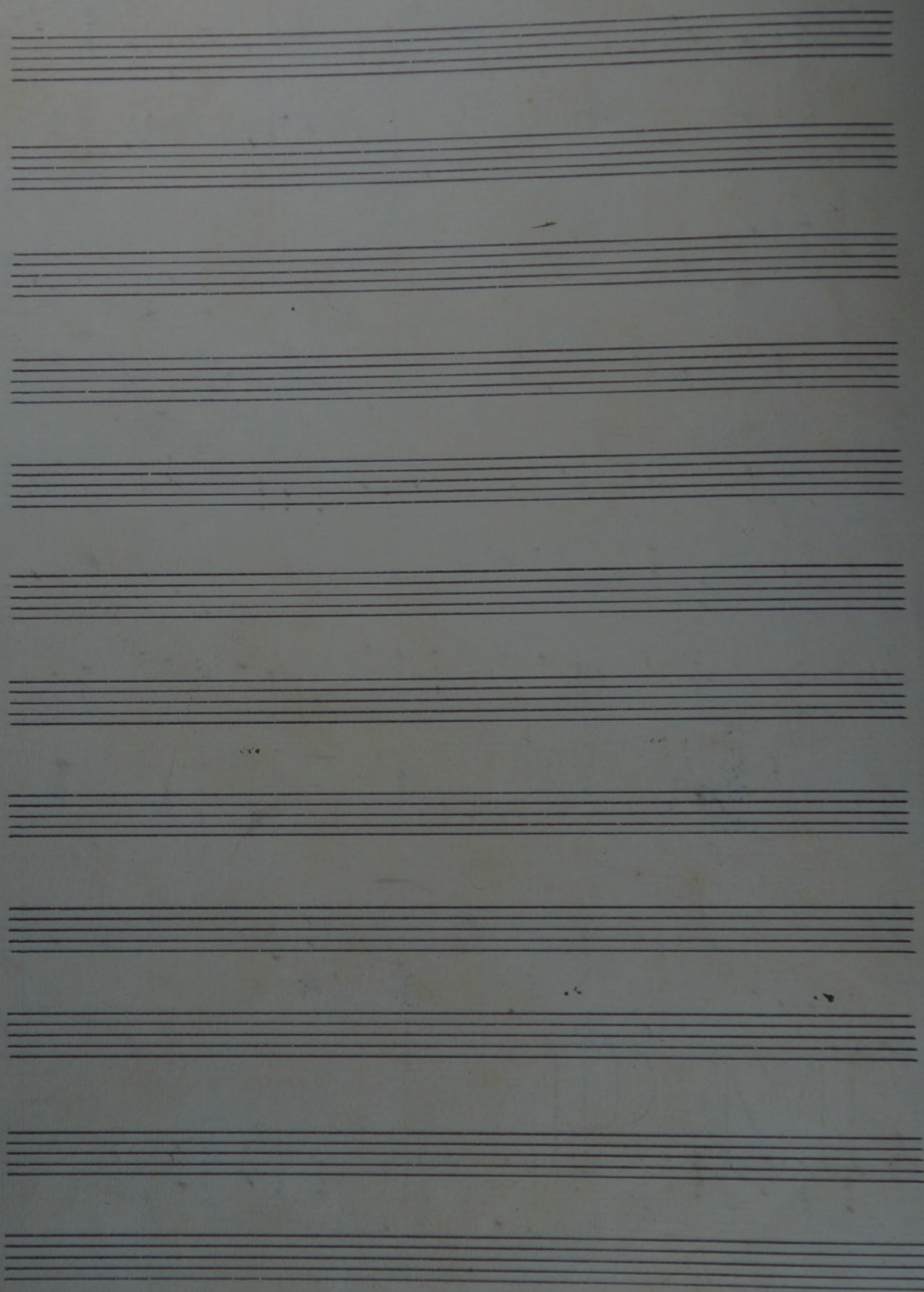
Handwritten musical notation on a grand staff. This system continues the piece with intricate melodic and harmonic development. A blue scribble is present on the right side of the page.

Handwritten musical notation on a grand staff. The notation includes various note values, rests, and accidentals. A blue scribble is visible on the right side.

Handwritten musical notation on a grand staff. This system shows a continuation of the musical themes with some dynamic markings like *dim.* and *pp*.

Handwritten musical notation on a grand staff. It includes the instruction *dim.* and a section marked *Repete a la parte de A a B* with a sub-note *31 sottopancia e segue*. A large blue scribble is on the right side.

Handwritten musical notation on a grand staff. This system concludes the page with various musical notations and dynamic markings. A blue scribble is on the left side.



Handwritten musical score, first system. Treble and bass clefs. Includes dynamic markings *pf.* and *ff.* and a blue handwritten number '4'.

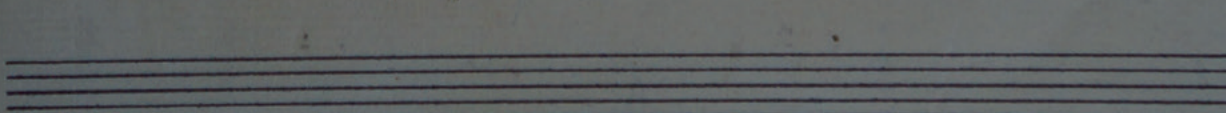
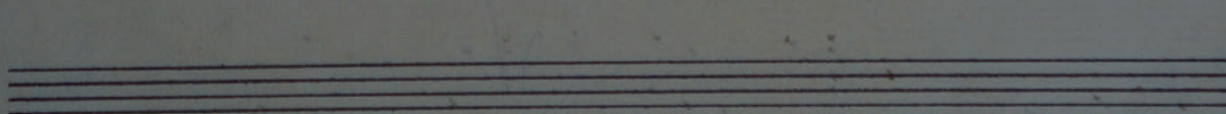
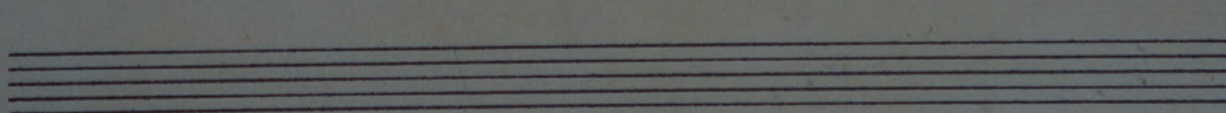
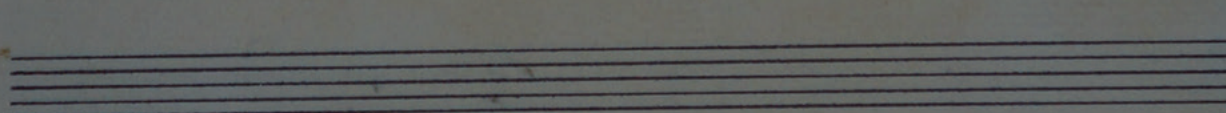
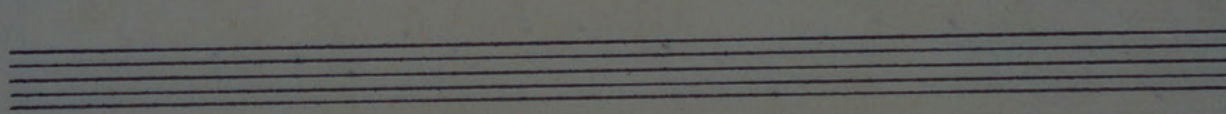
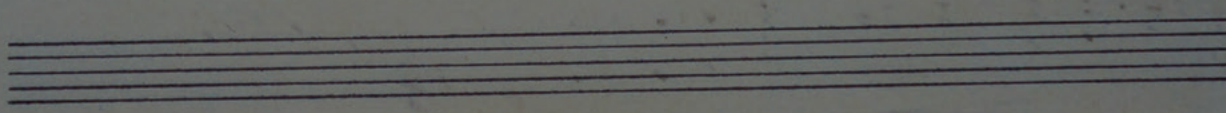
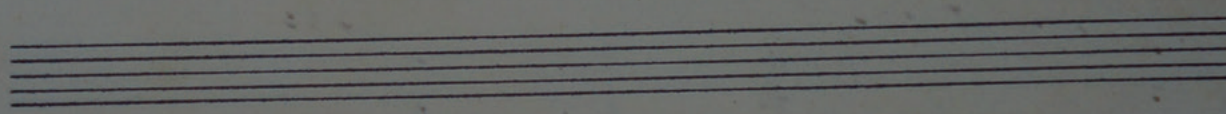
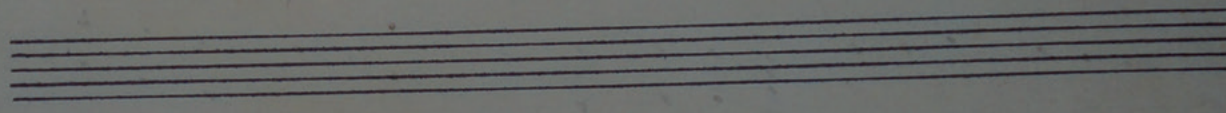
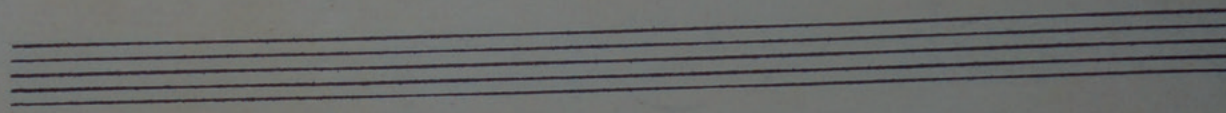
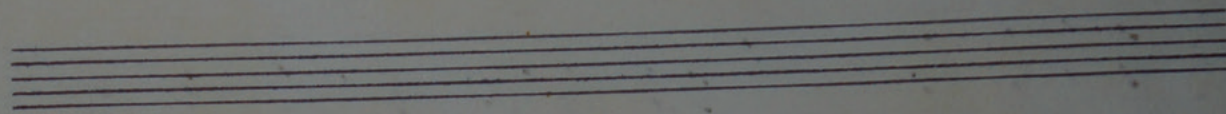
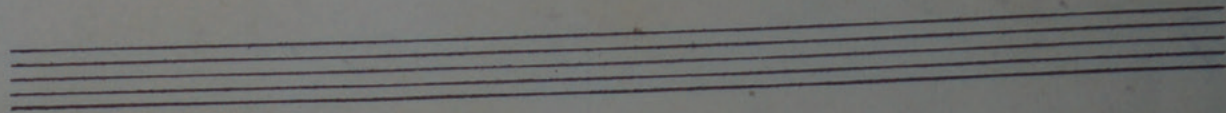
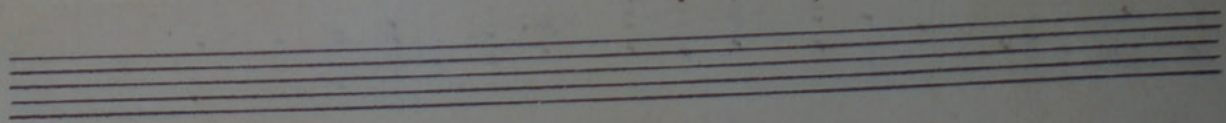
Handwritten musical score, second system. Treble and bass clefs. Includes dynamic markings *f.*, *rall.*, and *acc. poco*. A blue handwritten number '5' is present.

Handwritten musical score, third system. Treble and bass clefs. Includes dynamic markings *a poco* and *pf.*.

Handwritten musical score, fourth system. Treble and bass clefs. Includes dynamic markings *ff.* and *ff.*. A blue handwritten number '6' is present.

Handwritten musical score, fifth system. Treble and bass clefs. Includes dynamic markings *p.* and *p.*. A red handwritten number '7' is present. The system concludes with the text: *Après un grand accord et une pause à la Ce segue o final:*

Handwritten musical score, sixth system. Treble and bass clefs. Includes dynamic markings *dim.* and *dim.*. A red handwritten number '8' is present. The system concludes with the text: *acc. sempre*.



8a.

pp. sempre pp. f.

6/4

L. Levy
(L. Henri)

B. Cadem pour pravar:

Introduction 8 compassos			
1 ^a parte	32	"	
2 ^a "	36	"	
3 ^a "(A a B)	31	"	
que p ^a acabar a 1 ^a parte	1	"	(D)
4 ^a parte	34	"	
5 ^a "	30	"	até C
final	14	"	

186

Em 4 paginas.

