

Humoresca

L. L. L.

2.^o Valso Lento

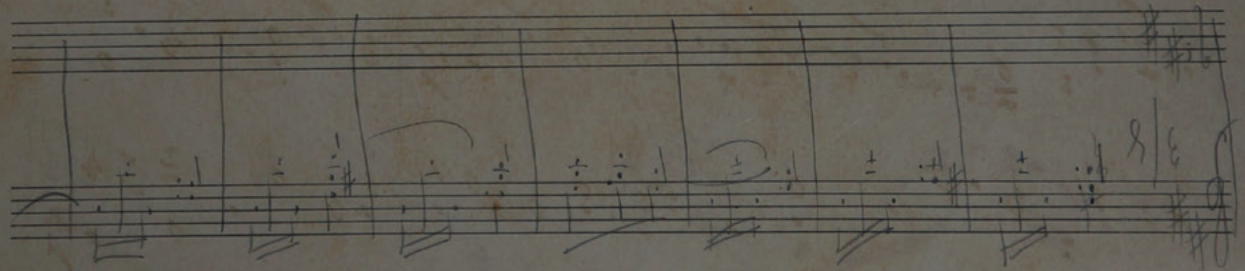
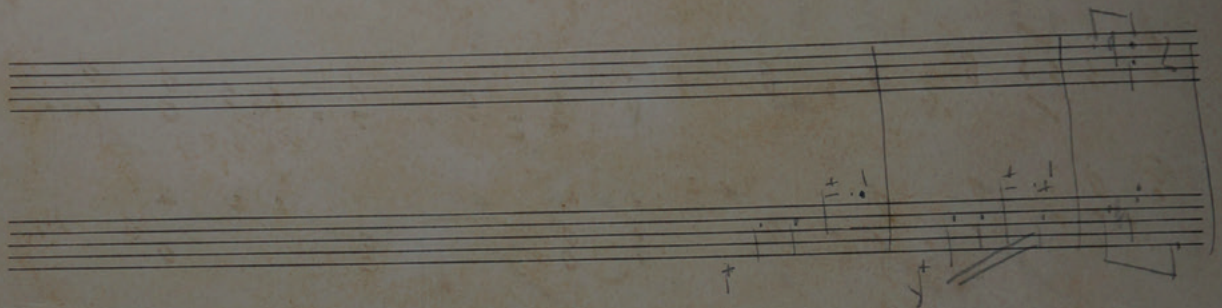
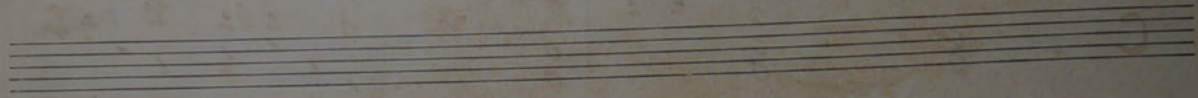
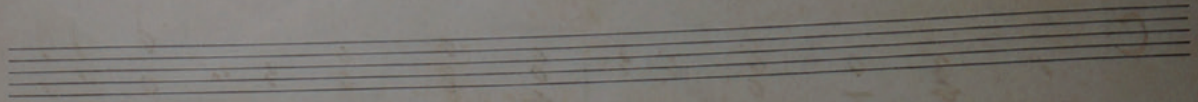
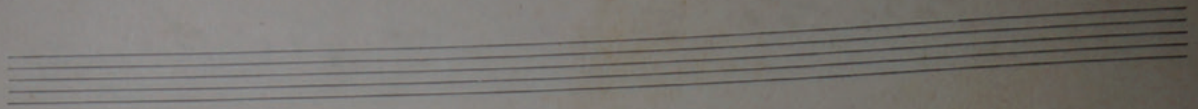
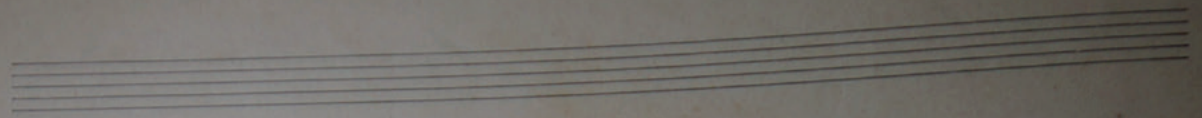
Handwritten musical notation for the first system. It consists of two staves: a treble clef staff and a bass clef staff. The key signature has two sharps (F# and C#). The time signature is 3/8. The notation includes various notes, rests, and dynamic markings such as *p* and *sfz*. There are some handwritten annotations like 'x' and '+' in the bass staff.

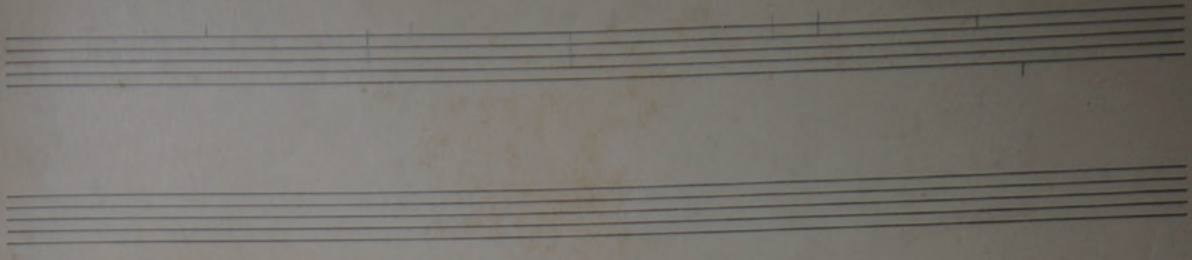
Handwritten musical notation for the second system, continuing from the first. It features two staves with treble and bass clefs, maintaining the 3/8 time signature and two-sharp key signature. The notation includes slurs, ties, and dynamic markings.

Handwritten musical notation for the third system. It consists of two staves with treble and bass clefs. The notation includes complex rhythmic patterns, slurs, and dynamic markings. There are some handwritten annotations like '=' and '+' in the bass staff.

Handwritten musical notation for the fourth system. It consists of two staves with treble and bass clefs. The notation includes various notes, rests, and dynamic markings. There are some handwritten annotations like '+' in the bass staff.

Handwritten musical notation for the fifth system. It consists of two staves with treble and bass clefs. The notation includes various notes, rests, and dynamic markings such as *sfz*. There are some handwritten annotations like '2' and '+' in the bass staff.



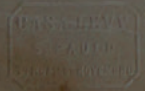


Handwritten musical notation on two staves. The top staff is in treble clef and the bottom in bass clef. Both are in the key of D major (one sharp) and common time (C). The notation includes various note values, rests, and dynamic markings such as ϕ and $\phi 10$.

Handwritten musical notation on two staves. The top staff is in treble clef and the bottom in bass clef. Both are in the key of D major (one sharp) and common time (C). The notation includes various note values, rests, and dynamic markings such as ϕ and $\phi 10$.

Handwritten musical notation on two staves. The top staff is in treble clef and the bottom in bass clef. Both are in the key of D major (one sharp) and common time (C). The notation includes various note values, rests, and dynamic markings such as ϕ and $\phi 10$.

Handwritten musical notation on two staves. The top staff is in treble clef and the bottom in bass clef. Both are in the key of D major (one sharp) and common time (C). The notation includes various note values, rests, and dynamic markings such as ϕ and $\phi 10$.



This image shows a page of handwritten musical notation on aged, yellowed paper. The score is organized into four systems, each consisting of two staves. The notation is dense and includes various musical symbols such as notes, rests, beams, and slurs. The first system begins with a treble clef and a key signature of two flats (B-flat and E-flat). The second system features a treble clef and a key signature of one flat (B-flat). The third system starts with a treble clef and a key signature of one flat (B-flat). The fourth system begins with a treble clef and a key signature of one flat (B-flat). The paper shows signs of age, including foxing and some staining. There are some handwritten annotations, such as "du" and "dab", and a small number "8" in the second system. The bottom of the page contains several empty staves with faint pencil markings.