



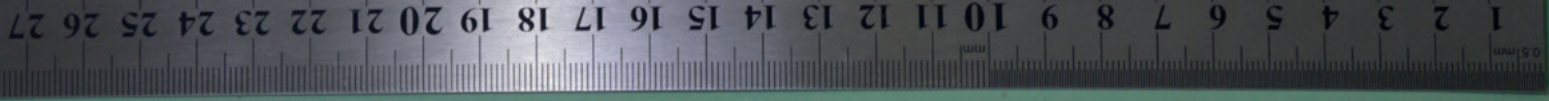
Barcarolla

Liano « De um conto de Turtado Filho » Luiz Levy op. 10

Tranquila
P e legato

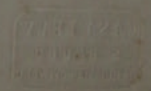
F. e cres - cen - do

P e decres - cen - do



Handwritten musical score on three staves. The notation includes notes, rests, and dynamic markings. The word "Largo" is written in the middle of the second staff. The score is written in ink on aged, yellowed paper.

Seven empty musical staves, each consisting of five horizontal lines, arranged vertically on the page.



Handwritten musical notation on a single staff, featuring a treble clef, a common time signature (C), and a key signature of one flat (B-flat). The notation includes a series of eighth and sixteenth notes, some beamed together, and rests. There are several plus signs (+) written below the notes, possibly indicating fingerings or performance instructions.

Handwritten musical notation on a single staff, featuring a treble clef and a common time signature (C). The notation includes a series of eighth and sixteenth notes, some beamed together, and rests. There are several plus signs (+) written below the notes, possibly indicating fingerings or performance instructions.

Handwritten musical notation on a single staff, featuring a treble clef and a common time signature (C). The notation includes a series of eighth and sixteenth notes, some beamed together, and rests. There are several plus signs (+) written below the notes, possibly indicating fingerings or performance instructions.

Handwritten musical notation on a single staff, featuring a treble clef and a common time signature (C). The notation includes a series of eighth and sixteenth notes, some beamed together, and rests. There are several plus signs (+) written below the notes, possibly indicating fingerings or performance instructions.

Handwritten musical notation on a single staff, featuring a treble clef and a common time signature (C). The notation includes a series of eighth and sixteenth notes, some beamed together, and rests. There are several plus signs (+) written below the notes, possibly indicating fingerings or performance instructions.

Handwritten musical notation on a single staff, featuring a treble clef and a common time signature (C). The notation includes a series of eighth and sixteenth notes, some beamed together, and rests. There are several plus signs (+) written below the notes, possibly indicating fingerings or performance instructions.

Moderato

p. *Espressivo*