

Doi Pedro Santana  
Jomes

Al  
Pariaçoens para Clavineta

epor

J. P. J. Jomes



Introduction

Clarinete em Si bemol

Clarinete

♩ = C

Piano

Handwritten musical notation for piano accompaniment, including treble and bass staves with notes and rests.

Cadencia *legitimo*

2011

Handwritten musical notation for a cadenza, showing a melodic line on a staff.

Segue Tema

Tema

Handwritten musical notation for the first staff of the main theme, featuring a melodic line with various notes and rests.

Andante

Handwritten musical notation for the piano accompaniment of the main theme, including treble and bass staves.



Handwritten musical notation on a single staff. It begins with a treble clef and a key signature of one sharp (F#). The notation includes several measures of music with slurs and dynamic markings. Above the first measure is the marking "1<sup>a</sup> var" with a "Tm" above it. Below the first measure is "1<sup>a</sup> var" and below the second measure is "2<sup>a</sup> var".

Handwritten musical notation on two staves. The upper staff contains dense, complex chordal textures with many notes and some slurs. The lower staff contains a more melodic line with some rests and slurs.

Handwritten musical notation on a single staff. It continues the melodic line from the previous system. It features slurs and dynamic markings. Below the first measure is "1<sup>a</sup> var" and below the second measure is "2<sup>a</sup> var".

Handwritten musical notation on two staves. The upper staff has dense chordal textures. The lower staff has a melodic line. The word "Segue" is written in a large, decorative cursive script at the end of the system.

1<sup>a</sup> var

Handwritten musical notation on a single staff. It begins with a treble clef and a key signature of one sharp. The notation includes several measures of music with slurs and dynamic markings. A "Tm" marking is present above the fourth measure.

Handwritten musical notation on a single staff. It begins with a treble clef and a key signature of one sharp. The notation includes several measures of music with slurs and dynamic markings.

Handwritten musical notation on a single staff. It begins with a treble clef and a key signature of one sharp. The notation includes several measures of music with slurs and dynamic markings.

Two empty musical staves at the bottom of the page.



Handwritten musical score for strings and woodwinds. The score is written on ten staves. The first staff contains a melodic line with various ornaments and slurs. The second and third staves are for woodwinds, with the word "stato" written above the notes. The fourth and fifth staves are for strings, with the word "Tr" (Trombone) written above the notes. The sixth and seventh staves are for woodwinds, with the word "Tr" written above the notes. The eighth and ninth staves are for strings, with the word "Tr" written above the notes. The tenth staff contains the instruction "Segue Tutta V. L." written in cursive. The score is written in a single system with repeat signs and first/second endings.



Tutti

Tutti

Handwritten musical score for the first system. It consists of three staves: treble, alto, and bass. The treble staff begins with a treble clef, a key signature of one flat (B-flat), and a common time signature (C). The first measure contains a whole note chord with a dynamic marking of *piano*. The second measure contains a whole note chord with a dynamic marking of *lento*. The rest of the system contains various rhythmic patterns and chords across all three staves.

Handwritten musical score for the second system. It consists of two staves. The first measure contains a treble clef, a key signature of one flat, and a common time signature. The second measure contains a treble clef, a key signature of one flat, and a common time signature. The rest of the system contains various rhythmic patterns and chords across both staves. The section is titled "Segue Variaçao Segunda" in cursive handwriting.

Var Var

Handwritten musical score for the third system. It consists of three staves: treble, alto, and bass. The treble staff begins with a treble clef, a key signature of one flat, and a common time signature. The first measure contains a whole note chord. The second measure contains a whole note chord. The rest of the system contains various rhythmic patterns and chords across all three staves. The section is titled "Var Var" in cursive handwriting. The signature "M.L." is written at the end of the system.



Handwritten musical notation on a single staff, featuring a series of eighth and sixteenth notes. The notation includes a treble clef, a key signature of one sharp (F#), and a common time signature (C). The piece concludes with a double bar line. Above the final two measures, there are handwritten annotations: "1<sup>a</sup> volta" and "2<sup>a</sup> volta", each with a slur underneath it.

Handwritten musical notation on two staves. The upper staff uses a treble clef and a key signature of one flat (Bb), containing a melodic line with various note values and rests. The lower staff uses a bass clef and contains a bass line with fewer notes, including some whole notes and rests.

Handwritten musical notation on a single staff, continuing the piece with eighth and sixteenth notes. It includes a treble clef, a key signature of one sharp (F#), and a common time signature (C). The notation ends with a double bar line.

Four empty musical staves, providing space for additional notation or performance instructions.

Handwritten musical notation on a single staff, featuring a series of eighth and sixteenth notes. The notation includes a treble clef, a key signature of one sharp (F#), and a common time signature (C). The piece concludes with a double bar line. Above the final two measures, there are handwritten annotations: "1<sup>a</sup> volta" and "2<sup>a</sup> volta", each with a slur underneath it.

Four empty musical staves, providing space for additional notation or performance instructions.

*Il C. Tutti V. M.*



3<sup>re</sup> Var.<sup>m</sup>

Handwritten musical notation on a single staff, featuring a treble clef, a key signature of one flat, and a series of eighth and sixteenth notes with various accidentals.

Handwritten musical notation on two staves, with a treble clef on the top staff and a bass clef on the bottom staff, showing a harmonic accompaniment.

Handwritten musical notation on a single staff, featuring a treble clef and a series of sixteenth-note passages. Two sections are circled and labeled "1<sup>re</sup> Var." and "2<sup>e</sup> Var."

Handwritten musical notation on two staves, with a treble clef on the top staff and a bass clef on the bottom staff, showing a harmonic accompaniment.

Handwritten musical notation on a single staff, featuring a treble clef and a series of sixteenth-note passages.

A series of empty musical staves, indicating the end of the written music on this page.



Handwritten musical notation on a single staff, featuring a treble clef, a key signature of one sharp (F#), and a 3/4 time signature. The notation includes a first ending bracket with the number '1' and a second ending bracket with the number '2'. The notes are primarily eighth and sixteenth notes.

*De Tutti. e P. Polaca. Allegro.*

Handwritten musical notation on a single staff, featuring a treble clef, a key signature of one sharp (F#), and a 3/4 time signature. The notation consists of a series of eighth and sixteenth notes, some with slurs and accents.

Two empty musical staves with a treble clef, a key signature of one sharp (F#), and a 3/4 time signature. The staves are otherwise blank.

Handwritten musical notation on a single staff, featuring a treble clef, a key signature of one sharp (F#), and a 3/4 time signature. The notation includes a first ending bracket with the number '1' and a second ending bracket with the number '2'. The notes are primarily eighth and sixteenth notes.

Two empty musical staves with a treble clef, a key signature of one sharp (F#), and a 3/4 time signature. The staves are otherwise blank.

*Alleg.  
20*

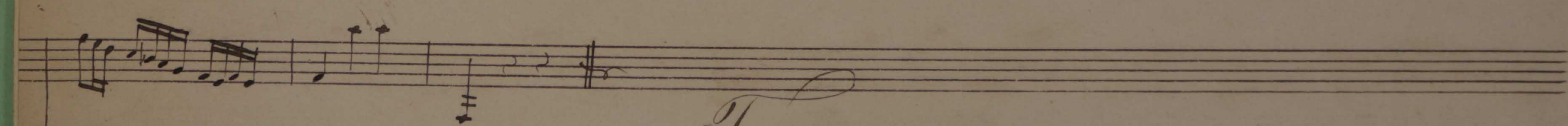
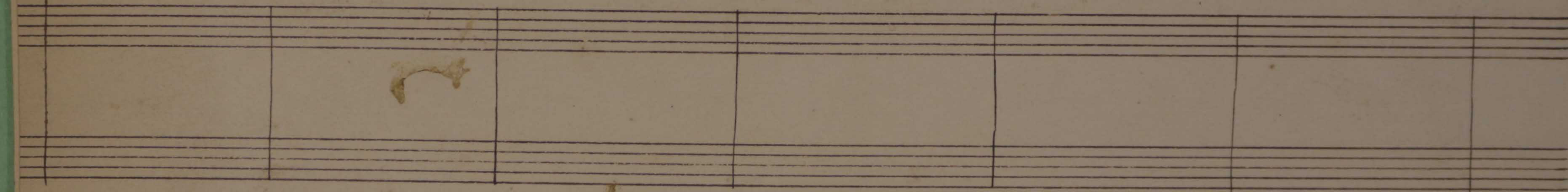
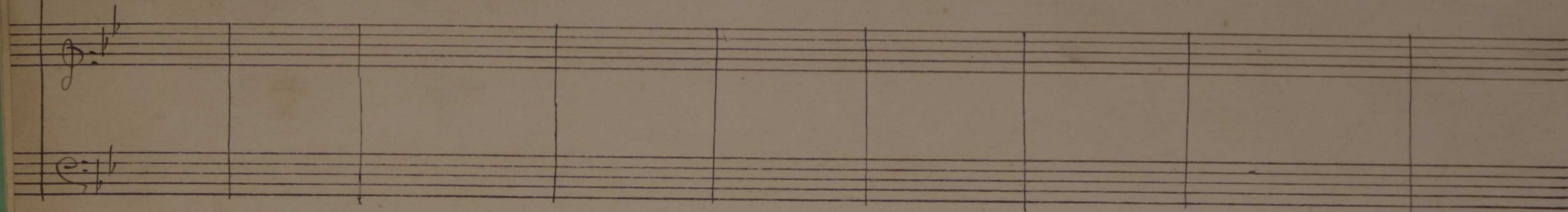


Handwritten musical notation on a single staff. The notation includes a treble clef, a key signature of one sharp (F#), and a time signature of 3/4. The first measure contains a complex chord with a sharp sign and a star symbol. The second measure features a series of six accents (>) above a sequence of notes. The rest of the staff contains various rhythmic patterns, including eighth and sixteenth notes, and rests.

Handwritten musical notation on a single staff, continuing the piece. It features a treble clef and a key signature of one sharp. The notation is dense with sixteenth and thirty-second notes, often beamed together. There are several sharp signs (#) and a flat sign (b) scattered throughout the staff.

Handwritten musical notation on a single staff, concluding the piece. It features a treble clef and a key signature of one sharp. The notation includes various rhythmic patterns and rests. The piece ends with a double bar line and a sharp sign. In the bottom right corner, there is a handwritten signature or initials.





*Fim.*

