

# Trio pour piano violon & violoncelle

pour Alex. Lamy. Op. 10

*Violon*  
*Violoncelle*  
*Piano*

*all.*  
*all.*  
*all.*

*p*  
*p*  
*legato*  
*ss*

*ritornello*

Handwritten musical notation for the first system, featuring a treble clef staff with a melodic line and a bass clef staff with a bass line. The key signature has two flats. The notation includes various note values, rests, and dynamic markings.

*piano*

Handwritten musical notation for the second system, including a vocal line with lyrics "res- poco a- que-" and a piano accompaniment. The notation is dense with notes and includes dynamic markings like "p".

Handwritten musical notation for the third system, showing a treble clef staff with a melodic line and a bass clef staff with a bass line. The notation includes various note values and rests.

Handwritten musical notation for the fourth system, featuring a treble clef staff with a melodic line and a bass clef staff with a bass line. The notation includes various note values, rests, and dynamic markings like "p".

Handwritten musical notation for the first system, consisting of two staves. The top staff is in treble clef and the bottom in bass clef, both with a key signature of two flats. The music includes various note values, rests, and dynamic markings such as '+' and 'ff'.

Handwritten musical notation for the second system, consisting of two staves. The top staff features complex rhythmic patterns with triplets and slurs, and dynamic markings like 'p' and 'ff'. The bottom staff continues the accompaniment with chords and notes.

Handwritten musical notation for the third system, consisting of two staves. The top staff has a melodic line with many accidentals and slurs. The bottom staff has a bass line with notes and rests, including a '40' marking.

Handwritten musical notation for the fourth system, consisting of two staves. The top staff is highly complex with many notes, slurs, and dynamic markings like 'ff'. The bottom staff has a bass line with notes and rests.

Handwritten musical notation on a grand staff. The upper staff is in treble clef and the lower staff is in bass clef. The music features a melodic line in the upper staff with various accidentals and a more rhythmic accompaniment in the lower staff. A dynamic marking *ss* is present in the lower staff.

Handwritten musical notation on a grand staff. The upper staff is in treble clef and the lower staff is in bass clef. The music features a melodic line in the upper staff with various accidentals and a more rhythmic accompaniment in the lower staff. A dynamic marking *p* is present in the lower staff.

Handwritten musical notation on a grand staff. The upper staff is in treble clef and the lower staff is in bass clef. The music features a melodic line in the upper staff with various accidentals and a more rhythmic accompaniment in the lower staff.

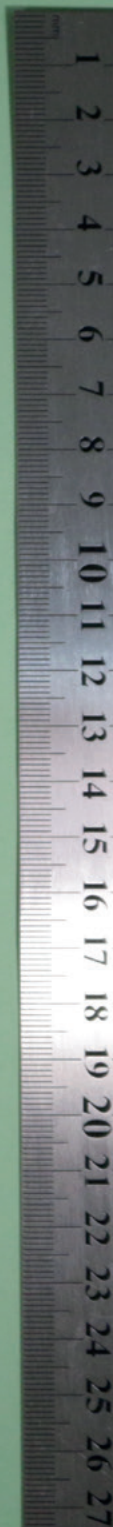
Handwritten musical notation on a grand staff. The upper staff is in treble clef and the lower staff is in bass clef. The music features a melodic line in the upper staff with various accidentals and a more rhythmic accompaniment in the lower staff. A dynamic marking *cres* is present in the lower staff.

Handwritten musical notation for the first system. The treble staff contains a series of notes with slurs and accents, ending with a fermata. The bass staff contains notes with slurs and accents, ending with a fermata. There are several plus signs (+) and a circled '0' at the end of the system.

Handwritten musical notation for the second system. The treble staff contains notes with slurs and accents, ending with a fermata. The bass staff contains notes with slurs and accents, ending with a fermata. There are several plus signs (+) and a circled '0' at the end of the system. The dynamic marking *ss* is present in both staves.

Handwritten musical notation for the third system. The treble staff contains notes with slurs and accents, ending with a fermata. The bass staff contains notes with slurs and accents, ending with a fermata. There are several plus signs (+) and a circled '0' at the end of the system. The dynamic marking *ss* is present in both staves.

Handwritten musical notation for the fourth system. The treble staff contains notes with slurs and accents, ending with a fermata. The bass staff contains notes with slurs and accents, ending with a fermata. There are several plus signs (+) and a circled '0' at the end of the system. The dynamic marking *ss* is present in both staves.



Handwritten musical notation for the first system, consisting of a treble and bass staff. The treble staff contains several measures with notes and rests, some marked with '+' signs. The bass staff contains notes and rests, including a measure with a '5' written below it.

Handwritten musical notation for the second system. The treble staff features a melodic line with slurs and '+' signs, with the word "Pia legato" written below it. The bass staff contains chords and notes, with some notes marked with '+' signs.

Handwritten musical notation for the third system. The treble staff contains a melodic line with slurs and '+' signs, with the word "Pia" written below it. The bass staff contains chords and notes, with some notes marked with '+' signs.

Handwritten musical notation for the fourth system. The treble staff contains a melodic line with slurs and '+' signs, with the word "Pia" written below it. The bass staff contains chords and notes, with some notes marked with '+' signs.

Handwritten musical notation for the first system. The top staff is in treble clef and contains a melodic line with several triplet markings (indicated by a '3' above the notes). The bottom staff is in bass clef and contains rests, with some small '+' and '=' symbols above the staff.

Handwritten musical notation for the second system. The top staff is in treble clef and contains notes with some slurs. The bottom staff is in bass clef and contains notes with dynamic markings: *ss*, *ss cres*, and *con*. There are also some '+' and '=' symbols above the staff.

Handwritten musical notation for the third system. The top staff is in treble clef and contains notes with some slurs. The bottom staff is in bass clef and contains notes with some slurs.

Handwritten musical notation for the fourth system. The top staff is in treble clef and contains notes with some slurs. The bottom staff is in bass clef and contains notes with dynamic markings: *ss*, *ss e cres*, and *ss*. There are also some '+' and '=' symbols above the staff.





Handwritten musical notation for the first system. The treble staff contains a series of eighth notes with various accidentals (flats and naturals). The bass staff contains a series of notes with accidentals, including a double flat and a sharp. There are some scribbles at the beginning of the system.

Handwritten musical notation for the second system. The treble staff has a large grid-like scribble at the beginning. The bass staff contains notes with accidentals, including a double flat and a sharp. There are some scribbles at the end of the system.

Handwritten musical notation for the third system. The treble staff contains notes with accidentals, including a double flat and a sharp. The bass staff contains notes with accidentals, including a double flat and a sharp.

Handwritten musical notation for the fourth system. The treble staff contains notes with accidentals, including a double flat and a sharp. The bass staff contains notes with accidentals, including a double flat and a sharp. There are some scribbles at the end of the system.

Handwritten text at the bottom of the page, possibly indicating a section or measure. The text is partially obscured by a large scribble.

Handwritten musical notation for the first system. The top staff is in treble clef and contains a complex melodic line with many accidentals (sharps, flats, naturals) and slurs. The bottom staff is in bass clef and contains a simple accompaniment of quarter and eighth notes.

Handwritten musical notation for the second system. The top staff is in treble clef and contains rhythmic patterns with notes and rests. The bottom staff is in bass clef and contains notes with a 'cres.' (crescendo) marking above it.

Handwritten musical notation for the third system. The top staff is in treble clef and contains melodic lines with slurs and accidentals. The bottom staff is in bass clef and contains accompaniment notes.

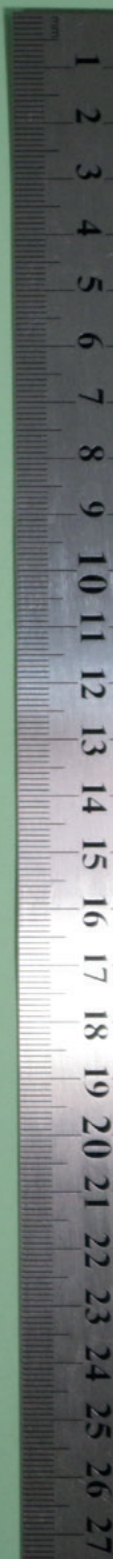
Handwritten musical notation for the fourth system. The top staff is in treble clef and contains dense chordal textures with many notes and accidentals. The bottom staff is in bass clef and contains accompaniment notes. There are 'SS' markings in both staves.

Handwritten musical notation on two staves. The top staff is in treble clef and the bottom in bass clef. The music features a complex melodic line with many slurs and ties. There are some markings above the staff, possibly indicating fingerings or dynamics.

Handwritten musical notation on two staves. The top staff is in treble clef and the bottom in bass clef. The music is highly complex with many slurs and ties. There are handwritten annotations: "SS" on the left, "cresc. do" in the middle, and "da bassa" at the bottom. The notation is dense and difficult to read.

Handwritten musical notation on two staves. The top staff is in treble clef and the bottom in bass clef. The music continues with complex melodic lines and slurs. There are some markings above the staff, possibly indicating fingerings or dynamics.

Handwritten musical notation on two staves. The top staff is in treble clef and the bottom in bass clef. The music is highly complex with many slurs and ties. There are handwritten annotations: "SS" on the left, "cresc. do" in the middle, and "da bassa" at the bottom. The notation is dense and difficult to read.



12

*andante*

*Violon*  
*Violoncelle*  
*andante*

Violin and Cello staves, both containing rests. The key signature is three flats (B-flat major or D-flat minor) and the time signature is 3/4.

*piano*  
*andante*

Piano introduction. The treble staff begins with a series of sixteenth notes, followed by a melodic line. The bass staff features a rhythmic accompaniment of eighth notes. Dynamics include *p* and *mf*. The tempo is *andante*.

Violin and Cello staves with musical notation. The violin part has a melodic line with some slurs, and the cello part has a corresponding accompaniment.

Piano accompaniment. The treble staff has a complex texture with many notes and slurs. The bass staff has a more rhythmic accompaniment. Dynamics include *mf*, *p*, and *res.* (resonance). The tempo is *andante*.

Handwritten musical notation for the first system, featuring a treble and bass clef with various notes and rests.

Handwritten musical notation for the second system, including a treble clef with a complex melodic line and a bass clef with accompaniment.

Handwritten musical notation for the third system, showing a treble clef with a melodic line and a bass clef with chords.

Handwritten musical notation for the fourth system, featuring a treble clef with a melodic line and a bass clef with chords, including dynamic markings like "pp" and "sempre".

Handwritten musical notation for the first system, consisting of two staves. The top staff is in treble clef and the bottom staff is in bass clef. Both staves contain a series of notes, including quarter and eighth notes, with some rests. The key signature has two flats.

Handwritten musical notation for the second system. It features a vocal line on a treble clef staff and a piano accompaniment on a bass clef staff. The piano part includes a figured bass line with various figures such as 'opio', 'tppio', 'tppio', 'tppio', 'tppio', 'tppio', 'tppio', and 'tppio'. The vocal line contains notes and rests.

Handwritten musical notation for the third system. It features a vocal line on a treble clef staff and a piano accompaniment on a bass clef staff. The piano part includes a figured bass line with various figures such as 'lab', 'tppio', 'tppio', 'tppio', and 'tppio'. The vocal line contains notes and rests.

Handwritten musical notation for the fourth system. It features a vocal line on a treble clef staff and a piano accompaniment on a bass clef staff. The piano part includes a figured bass line with various figures such as 'tppio', 'tppio', 'tppio', 'tppio', 'tppio', 'tppio', 'tppio', and 'tppio'. The vocal line contains notes and rests.



1  
2  
3  
4  
5  
6  
7  
8  
9  
10  
11  
12  
13  
14  
15  
16  
17  
18  
19  
20  
21  
22  
23  
24  
25  
26  
27

10

Handwritten musical notation for the first system, consisting of two staves. The top staff is in treble clef and the bottom staff is in bass clef. Both staves are in a key signature of two flats (B-flat and E-flat). The notation includes various note values, rests, and some accidentals.

Handwritten musical notation for the second system, consisting of two staves. The notation includes dynamic markings such as *pp* (pianissimo) and *p* (piano). There are also some markings that appear to be *ppp* and *ppp* in the lower staff.

Handwritten musical notation for the third system, consisting of two staves. A large slur is drawn over the top staff, encompassing several measures. The notation includes notes, rests, and some markings.

Handwritten musical notation for the fourth system, consisting of two staves. The notation includes dynamic markings such as *pp* (pianissimo) and *p* (piano). There are also some markings that appear to be *ppp* and *ppp* in the lower staff.



Handwritten musical notation for the first system, featuring a treble and bass staff with complex melodic lines and a fermata.

Handwritten musical notation for the second system, showing rhythmic patterns and a fermata.

Handwritten musical notation for the third system, including a fermata and a large red ink stain.

Handwritten musical notation for the fourth system, featuring a treble and bass staff with a fermata and a large red ink stain.

18 scherzo. Fuga

Scherzo-Fuga

all.<sup>o</sup> viv<sup>o</sup>

all.<sup>o</sup> viv<sup>o</sup>

all.<sup>o</sup> viv<sup>o</sup>

Scherzo Fuga

Handwritten musical notation for the first system. The treble staff contains a melodic line with eighth and sixteenth notes, including a trill-like figure. The bass staff provides a harmonic accompaniment with a few notes and rests. The key signature has two flats.

Handwritten musical notation for the second system. The treble staff shows a more active melodic line with sixteenth notes and some accidentals. The bass staff contains mostly rests, indicating a period of inactivity for the lower part.

Handwritten musical notation for the third system. The treble staff begins with a double bar line, followed by a melodic phrase. The bass staff features a long, sustained note with a slur, providing a harmonic anchor.

Handwritten musical notation for the fourth system. The treble staff starts with a double bar line and contains a melodic line with various intervals. The bass staff has a complex accompaniment with multiple notes and slurs, suggesting a more active role for the lower part.

a  
all  
al

coda

coda

Handwritten musical score for the first system, featuring treble and bass staves with notes and rests.

*Recap  
scher*

*De scherzo*

Handwritten musical score for the second system, featuring treble and bass staves with notes and rests.

*J. c. scher.  
Lento*

*coda*

Handwritten musical score for the first coda section, featuring treble and bass staves with notes and rests.

*attaca subito l' allegro molto*

*attaca subito l' allegro molto*

*coda*

Handwritten musical score for the second coda section, featuring treble and bass staves with notes and rests.

*attaca subito l' allegro molto*

22

*all<sup>o</sup> molto*

# Final

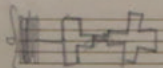
Handwritten musical notation for the first system, consisting of a treble clef staff and a bass clef staff. The key signature is two flats (B-flat and E-flat), and the time signature is 2/4. The tempo marking *all<sup>o</sup> molto* is written above the treble staff. The notation includes rests and melodic lines in both staves.

*all<sup>o</sup> molto. (unt mesure vaut deux des précédentes.)*

Handwritten musical notation for the second system, consisting of a treble clef staff and a bass clef staff. The key signature is two flats (B-flat and E-flat), and the time signature is 2/4. The tempo marking *all<sup>o</sup> molto* is written above the treble staff. The notation includes chords and melodic lines in both staves, with some notes marked with 'ss'.

Handwritten musical notation for the third system, consisting of a treble clef staff and a bass clef staff. The key signature is two flats (B-flat and E-flat), and the time signature is 2/4. The notation includes melodic lines and chords in both staves.

Handwritten musical notation for the fourth system, consisting of a treble clef staff and a bass clef staff. The key signature is two flats (B-flat and E-flat), and the time signature is 2/4. The tempo marking *all<sup>o</sup> molto* is written above the treble staff. The notation includes chords and melodic lines in both staves, with some notes marked with 'ss'.



Handwritten musical notation for the first system, consisting of a treble and bass staff. The treble staff features a melodic line with eighth and sixteenth notes, some with slurs and accents. The bass staff provides a harmonic accompaniment with quarter and eighth notes.

Handwritten musical notation for the second system, consisting of a treble and bass staff. The treble staff continues the melodic line with various ornaments and slurs. The bass staff features a more complex accompaniment with chords and moving lines.

Handwritten musical notation for the third system, consisting of a treble and bass staff. The treble staff shows a continuation of the melodic theme with some rests. The bass staff has a steady accompaniment with quarter notes.

Handwritten musical notation for the fourth system, consisting of a treble and bass staff. This system is more complex, featuring a treble staff with many notes, slurs, and dynamic markings like *ff* and *edp*. The bass staff has a rhythmic accompaniment with some rests and dynamic markings like *ff*.

Handwritten musical notation for the first system, featuring a treble and bass staff. The treble staff contains a melodic line with eighth and sixteenth notes, while the bass staff provides a rhythmic accompaniment with quarter and eighth notes. The key signature is one flat (B-flat).

Handwritten musical notation for the second system. The treble staff continues the melodic line, and the bass staff features a more active accompaniment with many beamed notes. Dynamic markings include *ff* (fortissimo) and *p* (piano).

Handwritten musical notation for the third system. The treble staff begins with a series of rests, followed by a melodic phrase. The bass staff continues with a steady accompaniment.

Handwritten musical notation for the fourth system. The treble staff has a melodic line with some slurs. The bass staff contains the instruction *Seus sempre* written in cursive. Dynamic markings include *ff*.



Handwritten musical notation for the first system, consisting of two staves. The top staff is in treble clef and the bottom in bass clef. The key signature has one flat (B-flat). The music consists of several measures with notes and rests.

Handwritten musical notation for the second system, consisting of two staves. It includes a measure number "34" above the first measure. The notation is dense with notes and rests.

Handwritten musical notation for the third system, consisting of two staves. The tempo marking "moderato molto" is written above the first measure. The music features a melodic line in the treble clef and a bass line in the bass clef.

Handwritten musical notation for the fourth system, consisting of two staves. The tempo marking "moderato molto" is written above the first measure. The notation includes notes, rests, and dynamic markings like "esce" and "pp".

Handwritten musical notation for the first system, consisting of a treble and bass staff. The treble staff contains a series of notes, including a half note, followed by eighth notes, and a triplet of eighth notes. The bass staff contains a half note, followed by eighth notes and a triplet of eighth notes.

*al tempo*

Handwritten musical notation for the second system. The treble staff features a complex rhythmic pattern with many beamed notes and rests. The bass staff has a simple accompaniment with a few notes and rests.

Handwritten musical notation for the third system. The treble staff shows a melodic line with various note values and rests. The bass staff provides a steady accompaniment with a few notes and rests.

Handwritten musical notation for the fourth system. The treble staff contains a complex rhythmic pattern with many beamed notes and rests. The bass staff has a simple accompaniment with a few notes and rests.

Handwritten musical notation on two staves. The top staff is in treble clef and the bottom in bass clef. The music features a melodic line with some rests and a bass line with a similar rhythmic pattern. A double bar line is present. Annotations include "pD, legg" at the top right and "pD" below the double bar line.

Handwritten musical notation on two staves. The top staff is in treble clef and the bottom in bass clef. The music consists of dense chords and arpeggiated figures. A double bar line is present. Annotations include "ff" in both staves, "pD" below the double bar line, and "molto connesso + " above the final notes.

Handwritten musical notation on two staves. The top staff is in treble clef and the bottom in bass clef. The music features long, sweeping melodic lines with many ties, suggesting a slow, sustained passage.

Handwritten musical notation on two staves. The top staff is in treble clef and the bottom in bass clef. The music is more rhythmic and melodic, with many eighth and sixteenth notes. There are some plus signs (+) scattered throughout the notation.

Handwritten musical notation on two staves. The top staff is in treble clef and the bottom in bass clef. The music consists of several measures with various note values, including quarter and eighth notes, and rests. There are some slurs and ties present.

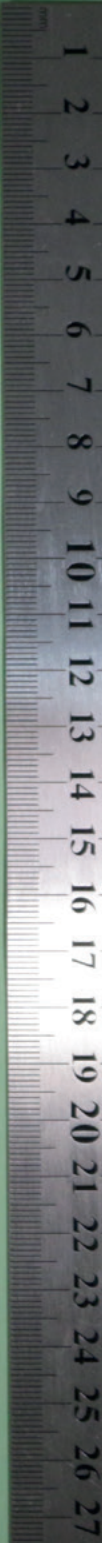
Handwritten musical notation on two staves. The top staff is in treble clef and the bottom in bass clef. This system features more complex rhythmic patterns, including sixteenth notes and beams. There are some handwritten annotations or corrections in the top staff.

Handwritten musical notation on two staves. The top staff is in treble clef and the bottom in bass clef. The notation includes various note values and rests, with some slurs and ties. There are some handwritten annotations in the top staff.

Handwritten musical notation on two staves. The top staff is in treble clef and the bottom in bass clef. This system contains more complex rhythmic patterns, including sixteenth notes and beams. There are some handwritten annotations in the top staff.

Partial view of handwritten musical notation on the right page, showing the right edge of the staves and some notes.

Handwritten musical notation on the left margin.



Handwritten musical notation for the first system. The top staff is in treble clef and the bottom staff is in bass clef. The key signature has one flat. The music consists of several measures with notes, rests, and dynamic markings such as *p*. There are some handwritten annotations above the notes.

Handwritten musical notation for the second system. The top staff is in treble clef and the bottom staff is in bass clef. The music features complex rhythmic patterns, including triplets and sixteenth notes. Dynamic markings like *p* are present. There are also some handwritten annotations above the notes.

Handwritten musical notation for the third system. The top staff is in treble clef and the bottom staff is in bass clef. The music shows melodic lines in both staves with various note values and rests.

Handwritten musical notation for the fourth system. The top staff is in treble clef and the bottom staff is in bass clef. The music includes dynamic markings such as *cres* and *ff*. At the bottom of the system, there are four slanted lines, possibly representing a specific performance instruction or a technical exercise.

Handwritten musical notation on two staves. The top staff begins with a treble clef and a key signature of two flats (B-flat and E-flat). The bottom staff begins with a bass clef and the same key signature. The music consists of several measures of notes and rests. A blue 'X' is written above the first measure of the top staff, and a blue vertical mark is present above the eighth measure of the top staff.

Handwritten musical notation on two staves. The top staff begins with a treble clef and a key signature of two flats. The word *allegro* is written above the first measure. The bottom staff begins with a bass clef and the same key signature. The music features a series of chords and melodic lines. A blue 'X' is written above the first measure of the top staff. The word *ff* (fortissimo) is written above the first measure of the bottom staff, and another *ff* is written above the eighth measure of the bottom staff.

Handwritten musical notation on two staves. The top staff begins with a treble clef and a key signature of two flats. The bottom staff begins with a bass clef and the same key signature. The music consists of several measures of notes and rests. A blue vertical mark is present above the fifth measure of the top staff.

Handwritten musical notation on two staves. The top staff begins with a treble clef and a key signature of two flats. The bottom staff begins with a bass clef and the same key signature. The music features a series of chords and melodic lines. The word *Dim* (diminuendo) is written above the eighth measure of the bottom staff.

32

Handwritten musical notation for the first system, consisting of a treble and bass staff. The treble staff begins with a treble clef and a key signature of two flats (B-flat and E-flat). The melody starts with a dotted quarter note, followed by eighth notes, and then a half note. The bass staff begins with a bass clef and a key signature of two flats. It features a series of eighth notes and quarter notes, with some notes beamed together.

Handwritten musical notation for the second system, consisting of a treble and bass staff. The treble staff continues the melody from the first system, featuring a series of eighth notes and quarter notes. The bass staff features a series of eighth notes and quarter notes, with some notes beamed together. There are some handwritten annotations in the bass staff, including the word "pizz." and "pp.".

Handwritten musical notation for the third system, consisting of a treble and bass staff. The treble staff continues the melody, featuring a series of eighth notes and quarter notes. The bass staff features a series of eighth notes and quarter notes, with some notes beamed together.

Handwritten musical notation for the fourth system, consisting of a treble and bass staff. The treble staff continues the melody, featuring a series of eighth notes and quarter notes. The bass staff features a series of eighth notes and quarter notes, with some notes beamed together. There is a handwritten annotation "sf" in the bass staff.



Handwritten musical notation for the first system, consisting of a treble and bass staff. The treble staff begins with a treble clef, a key signature of two flats (B-flat and E-flat), and a common time signature. It features a melodic line with a triplet of eighth notes marked with a '3' above it. The bass staff has a bass clef and contains a bass line with various note values and rests.

Handwritten musical notation for the second system, consisting of a treble and bass staff. The treble staff has a treble clef and a key signature of two flats. The bass staff has a bass clef and contains a bass line. The word "Soprano" is written in cursive in the bass staff, with "eyes" written below it.

Handwritten musical notation for the third system, consisting of a treble and bass staff. The treble staff has a treble clef and a key signature of two flats. The bass staff has a bass clef and contains a bass line. The notation includes various note values and rests.

Handwritten musical notation for the fourth system, consisting of a treble and bass staff. The treble staff has a treble clef and a key signature of two flats. The bass staff has a bass clef and contains a bass line. The notation includes various note values, rests, and dynamic markings such as 'ff' and 'f'.

Handwritten musical notation for the first system, consisting of two staves with treble and bass clefs. The music features a melodic line in the treble and a supporting line in the bass, with various accidentals and slurs.

Handwritten musical notation for the second system, consisting of two staves. The upper staff has a treble clef and contains a melodic line with a fermata. The lower staff has a bass clef and contains a more complex rhythmic accompaniment. The word "sempre" is written above the lower staff.

Handwritten musical notation for the third system, consisting of two staves. The music is sparse, with long rests and simple melodic fragments. The instruction "poco più mosso" is written above the treble staff.

Handwritten musical notation for the fourth system, consisting of two staves. The lower staff features a complex, dense accompaniment with many notes. The instruction "poco più mosso" is written above the treble staff.

Handwritten musical notation for the first system, consisting of two staves. The top staff is in treble clef and the bottom staff is in bass clef. Both staves are in a key signature of two flats (B-flat and E-flat). The notation includes various note values, rests, and bar lines.

Handwritten musical notation for the second system, featuring dense chordal textures and complex rhythmic patterns. The notation is highly detailed, with many notes and accidentals, suggesting a more technically demanding piece.

Handwritten musical notation for the third system, showing melodic lines and harmonic accompaniment. The notation includes slurs and dynamic markings, indicating phrasing and volume changes.

Handwritten musical notation for the fourth system, concluding with a double bar line and a fermata. The notation includes various musical symbols and markings, such as slurs and dynamic markings.

Handwritten musical notation for the first system. The treble staff contains a melody with two triplet markings. The bass staff contains a bass line with various accidentals and rests.

Handwritten musical notation for the second system. The treble staff contains a complex texture with many notes and accidentals. The bass staff contains a bass line with various accidentals and rests.

Handwritten musical notation for the third system. The treble staff contains a melody with various accidentals. The bass staff contains a bass line with various accidentals and rests.

Handwritten musical notation for the fourth system. The treble staff contains a complex texture with many notes and accidentals. The bass staff contains a bass line with various accidentals and rests.

Handwritten musical notation for the first system, consisting of a treble staff and a bass staff. The treble staff contains several measures of music with eighth and sixteenth notes, some beamed together. The bass staff contains fewer notes, including some half notes and rests.

Handwritten musical notation for the second system, including a treble staff and a bass staff. The treble staff has a dynamic marking *sfz al fine* and a fermata over a note. The bass staff has a dynamic marking *p* and a fermata over a note. There are also some handwritten annotations like *rit* and *all*.

Handwritten musical notation for the third system, consisting of a treble staff and a bass staff. The treble staff has a few notes and rests, while the bass staff has a series of notes with a slur over them.

Handwritten musical notation for the fourth system, including a treble staff and a bass staff. The treble staff has a dynamic marking *sfz* and a fermata. The bass staff has a dynamic marking *p* and a fermata. There are also some handwritten annotations like *rit* and *all*.

Alex. Levy  
10/1/22

Handwritten musical notation on a page of aged, yellowed paper. The page contains 12 staves, each consisting of five horizontal lines. The notation is extremely faint and illegible, appearing as light grey or brownish marks. The paper shows signs of wear, including foxing and staining, particularly along the right edge and in the center.

1  
2  
3  
4  
5  
6  
7  
8  
9  
10  
11  
12  
13  
14  
15  
16  
17  
18  
19  
20  
21  
22  
23  
24  
25  
26  
27