

L'outro andante

- Andante -
Violon

rit. e da fine

Handwritten musical score for Violin, consisting of 14 numbered staves. The score includes various musical notations such as notes, rests, and dynamic markings.

Key markings and annotations include:

- Andante* (written above the first staff)
- Violon p. express.* (written above the first staff)
- pp* (pianissimo) and *cres.* (crescendo) markings in the lower staves.
- molto espressiono* (written above the 10th staff)
- rit.* (ritardando) and *da fine* markings at the end of the piece.

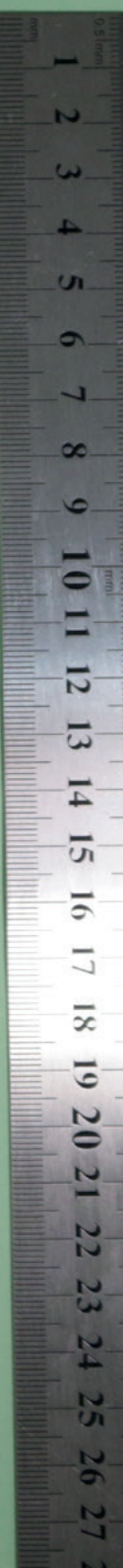
The score is written on aged, yellowed paper with some staining and a ruler is visible on the right edge.

Handwritten musical score on four staves. The notation includes treble clefs, a key signature of two flats, and a 3/4 time signature. The score features various musical notations such as notes, rests, and dynamic markings. Annotations include:

- pp espress* (pianissimo, expressive) at the beginning of the first staff.
- espress* (expressive) written below the first and second staves.
- espress.* (expressive) written below the third staff.
- ppp* (pianississimo) written below the fourth staff.
- morendo* (diminuendo) written below the fourth staff.
- ff* (fortissimo) written above the fourth staff.
- espress* (expressive) written above the fourth staff.
- espress* (expressive) written below the fourth staff.

Partial view of a handwritten musical score on the right page, showing the right edge of the staves and some notation.

Handwritten musical score on aged paper, featuring ten staves of music. The score is written in a single system with various clefs and time signatures. The music includes dynamic markings such as *pp*, *pp*, *pp*, *pp*, *pp*, *pp*, *pp*, *pp*, *pp*, and *pp*. Performance instructions include *Andante*, *express.*, *allargando*, *espressivo*, *espress.*, *allarg.*, and *espress.*. The score contains several measures with triplets and complex rhythmic patterns. The word *res* is written below the first staff, and *res* is written below the second staff. The word *res* is written below the third staff, and *res* is written below the fourth staff. The word *res* is written below the fifth staff, and *res* is written below the sixth staff. The word *res* is written below the seventh staff, and *res* is written below the eighth staff. The word *res* is written below the ninth staff, and *res* is written below the tenth staff. The word *res* is written below the eleventh staff, and *res* is written below the twelfth staff. The word *res* is written below the thirteenth staff, and *res* is written below the fourteenth staff. The word *res* is written below the fifteenth staff, and *res* is written below the sixteenth staff. The word *res* is written below the seventeenth staff, and *res* is written below the eighteenth staff. The word *res* is written below the nineteenth staff, and *res* is written below the twentieth staff. The word *res* is written below the twenty-first staff, and *res* is written below the twenty-second staff. The word *res* is written below the twenty-third staff, and *res* is written below the twenty-fourth staff. The word *res* is written below the twenty-fifth staff, and *res* is written below the twenty-sixth staff. The word *res* is written below the twenty-seventh staff, and *res* is written below the twenty-eighth staff. The word *res* is written below the twenty-ninth staff, and *res* is written below the thirtieth staff. The word *res* is written below the thirty-first staff, and *res* is written below the thirty-second staff. The word *res* is written below the thirty-third staff, and *res* is written below the thirty-fourth staff. The word *res* is written below the thirty-fifth staff, and *res* is written below the thirty-sixth staff. The word *res* is written below the thirty-seventh staff, and *res* is written below the thirty-eighth staff. The word *res* is written below the thirty-ninth staff, and *res* is written below the fortieth staff. The word *res* is written below the forty-first staff, and *res* is written below the forty-second staff. The word *res* is written below the forty-third staff, and *res* is written below the forty-fourth staff. The word *res* is written below the forty-fifth staff, and *res* is written below the forty-sixth staff. The word *res* is written below the forty-seventh staff, and *res* is written below the forty-eighth staff. The word *res* is written below the forty-ninth staff, and *res* is written below the fiftieth staff. The word *res* is written below the fifty-first staff, and *res* is written below the fifty-second staff. The word *res* is written below the fifty-third staff, and *res* is written below the fifty-fourth staff. The word *res* is written below the fifty-fifth staff, and *res* is written below the fifty-sixth staff. The word *res* is written below the fifty-seventh staff, and *res* is written below the fifty-eighth staff. The word *res* is written below the fifty-ninth staff, and *res* is written below the sixtieth staff. The word *res* is written below the sixty-first staff, and *res* is written below the sixty-second staff. The word *res* is written below the sixty-third staff, and *res* is written below the sixty-fourth staff. The word *res* is written below the sixty-fifth staff, and *res* is written below the sixty-sixth staff. The word *res* is written below the sixty-seventh staff, and *res* is written below the sixty-eighth staff. The word *res* is written below the sixty-ninth staff, and *res* is written below the seventieth staff. The word *res* is written below the seventy-first staff, and *res* is written below the seventy-second staff. The word *res* is written below the seventy-third staff, and *res* is written below the seventy-fourth staff. The word *res* is written below the seventy-fifth staff, and *res* is written below the seventy-sixth staff. The word *res* is written below the seventy-seventh staff, and *res* is written below the seventy-eighth staff. The word *res* is written below the seventy-ninth staff, and *res* is written below the eightieth staff. The word *res* is written below the eighty-first staff, and *res* is written below the eighty-second staff. The word *res* is written below the eighty-third staff, and *res* is written below the eighty-fourth staff. The word *res* is written below the eighty-fifth staff, and *res* is written below the eighty-sixth staff. The word *res* is written below the eighty-seventh staff, and *res* is written below the eighty-eighth staff. The word *res* is written below the eighty-ninth staff, and *res* is written below the ninetieth staff. The word *res* is written below the ninety-first staff, and *res* is written below the ninety-second staff. The word *res* is written below the ninety-third staff, and *res* is written below the ninety-fourth staff. The word *res* is written below the ninety-fifth staff, and *res* is written below the ninety-sixth staff. The word *res* is written below the ninety-seventh staff, and *res* is written below the ninety-eighth staff. The word *res* is written below the ninety-ninth staff, and *res* is written below the hundredth staff.



Handwritten musical notation on a single staff. The notation begins with a bass clef and a key signature of two flats (B-flat and E-flat). The first measure contains a quarter note G2. The second measure contains a beamed eighth-note triplet (F2, E2, D2). The third measure contains a quarter note C2. The fourth measure contains a dotted quarter note B1. The fifth measure contains a dotted quarter note A1. The sixth measure contains a quarter note G1. The seventh measure contains a quarter note F1. The eighth measure contains a quarter note E1. The ninth measure contains a quarter note D1. The tenth measure contains a quarter note C1. The eleventh measure contains a quarter note B0. The twelfth measure contains a quarter note A0. The thirteenth measure contains a quarter note G0. The notation ends with a fermata over a whole note G0. Below the staff, the following dynamic markings and performance instructions are written: *p*, *espress*, *dim*, and *marcato*. A dashed line is drawn under the *dim* and *marcato* markings. The number 114 is written in the top right corner of the staff.

Ten empty musical staves, each consisting of five horizontal lines, arranged vertically below the first staff. The paper shows signs of age, including yellowing and a tear on the right side.