

Alexandre Leuy
L. Paulo

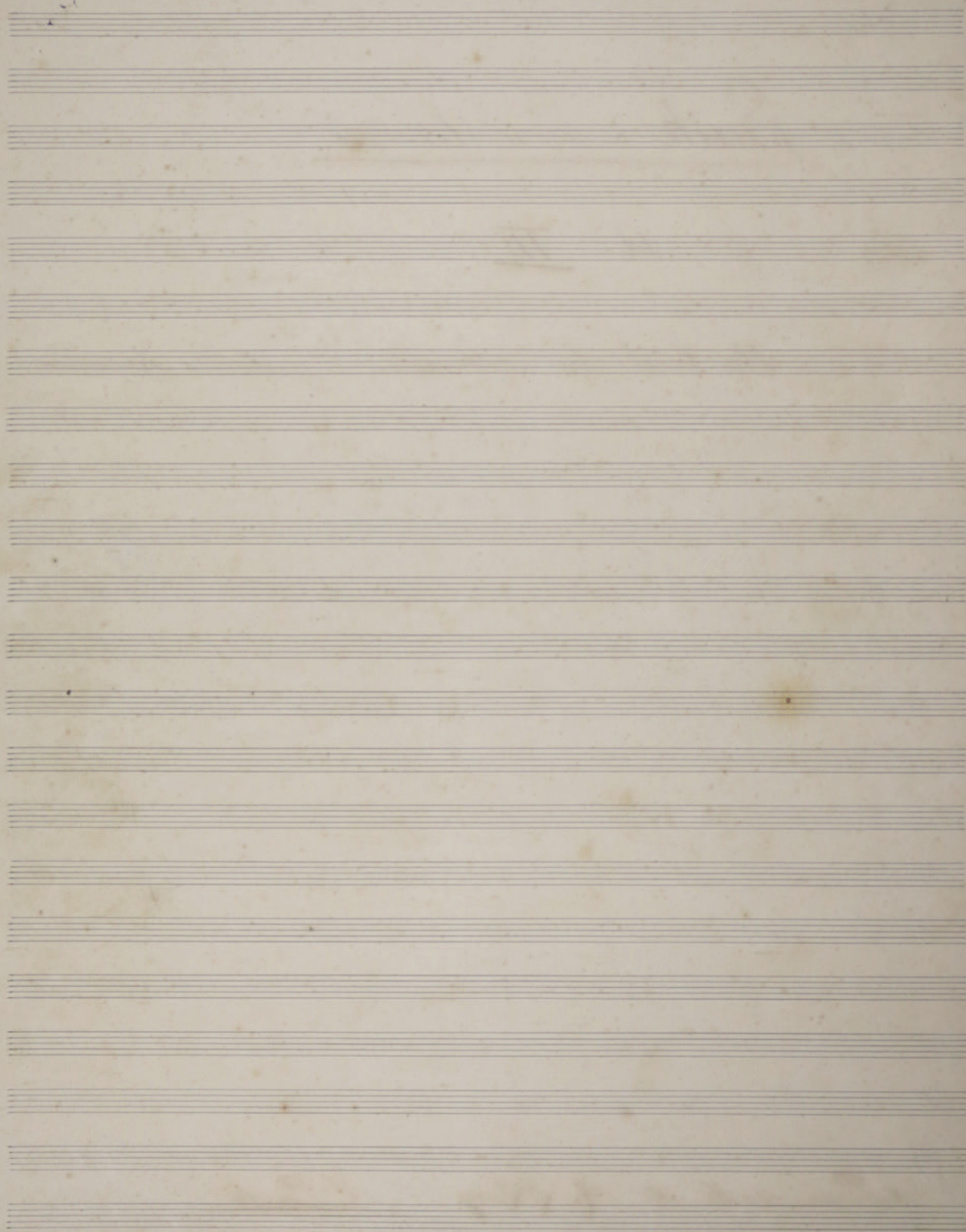
Suite Brésilienne

(N^o III)

Au bord du ruisseau - Idylle Fugitive
Sentimentale

Propriedade de A. L. Leuy L. Paulo

Executada pela 1ª vez em S. Paulo, no "Municipal"
pela Sociedade de Concertos Sinfonicos
sob a regencia do Maestro Mompalao (João)
em noite de 2 de Outubro de 1930



Suite Brasileira

III (A beira do regato. *Dueto sentimental*)

Alexandre Levy
6. Paulo

2 Flautas $\text{F}^{\flat} \text{ } 8/8$ *1. solo*

2 Clarinettes si^{\flat} $\text{F}^{\flat} \text{ } 8/8$

2 Fagotes $\text{F}^{\flat} \text{ } 8/8$

2 Trompas (chorn.) Fa $\text{F}^{\flat} \text{ } 8/8$

1. Violino $\text{F}^{\flat} \text{ } 8/8$ *8*

2. Violino $\text{F}^{\flat} \text{ } 8/8$ *8*

1. Alto $\text{F}^{\flat} \text{ } 8/8$ *con corda*

2. V. Cello $\text{F}^{\flat} \text{ } 8/8$

2. C. Basso $\text{F}^{\flat} \text{ } 8/8$

A

Fl. $\text{F}^{\flat} \text{ } 8/8$

Cl. $\text{F}^{\flat} \text{ } 8/8$

Fg. $\text{F}^{\flat} \text{ } 8/8$

Tr. $\text{F}^{\flat} \text{ } 8/8$

Violino $\text{F}^{\flat} \text{ } 8/8$ *8*

Violino $\text{F}^{\flat} \text{ } 8/8$ *8*

B

Handwritten musical notation for section B, first system. It consists of three staves. The top staff is in treble clef with a key signature of two flats (Bb). The middle staff is in bass clef with a key signature of two flats (Bb). The bottom staff is in bass clef with a key signature of two flats (Bb). The notation includes various rhythmic values, accidentals, and dynamic markings.

Handwritten musical notation for section B, second system. It consists of two staves, both in treble clef with a key signature of two flats (Bb). The notation features complex rhythmic patterns and accidentals.

C

Handwritten musical notation for section C, first system. It consists of seven staves. The top two staves are in treble clef with a key signature of two flats (Bb). The middle staff is in bass clef with a key signature of two flats (Bb). The bottom three staves are in bass clef with a key signature of two flats (Bb). The notation includes various rhythmic values, accidentals, and dynamic markings.

D

The first system of the handwritten musical score consists of eight staves. The top staff is in treble clef with a key signature of two flats (Bb, Eb) and a time signature of 7/8. It begins with a treble clef, a key signature of two flats, and a time signature of 7/8. The notation includes various note values, rests, and dynamic markings such as *f* and *mf*. A large blue letter 'D' is written above the second staff. The bottom staff is in bass clef with a key signature of two flats and a time signature of 7/8. The system concludes with a double bar line and a fermata over the final note.

The second system of the handwritten musical score continues the composition with eight staves. The notation is dense, featuring many sixteenth and thirty-second notes, often beamed together. There are several dynamic markings, including *f*, *mf*, and *ff*. The system ends with a double bar line and a fermata over the final note.

E

7

Handwritten musical score for system 7, measures 1-5. The system consists of seven staves. The top staff is a treble clef with a key signature of one sharp (F#) and a common time signature (C). It contains a complex melodic line with many sixteenth and thirty-second notes, some beamed together. A large blue letter 'E' is written above the first measure. The second staff is a treble clef with a common time signature, containing a few notes. The third staff is a bass clef with a common time signature, containing a few notes. The fourth staff is a treble clef with a common time signature, containing a few notes. The fifth staff is a treble clef with a common time signature, containing a complex melodic line with many sixteenth and thirty-second notes, similar to the top staff. The sixth staff is a bass clef with a common time signature, containing a few notes. The seventh staff is a bass clef with a common time signature, containing a few notes.

8

Handwritten musical score for system 8, measures 1-5. The system consists of seven staves. The top staff is a treble clef with a key signature of one sharp (F#) and a common time signature (C). It contains a complex melodic line with many sixteenth and thirty-second notes, some beamed together. The second staff is a treble clef with a common time signature, containing a few notes. The third staff is a bass clef with a common time signature, containing a few notes. The fourth staff is a treble clef with a common time signature, containing a few notes. The fifth staff is a treble clef with a common time signature, containing a complex melodic line with many sixteenth and thirty-second notes, similar to the top staff. The sixth staff is a bass clef with a common time signature, containing a few notes. The seventh staff is a bass clef with a common time signature, containing a few notes.

F

Handwritten musical score for the first system, consisting of seven staves. The notation includes various note values, rests, and dynamic markings such as *f* and *pp*. There are also some handwritten annotations in blue ink, including the word "ritardando" written across the middle staves.

G

Handwritten musical score for the second system, consisting of seven staves. The notation continues with various note values and rests. Dynamic markings include *pp* and *p*. There are also some handwritten annotations in blue ink, including the word "ritardando" written across the middle staves.

H

Handwritten musical score for the first system. It consists of seven staves. The top staff is a treble clef with a complex melodic line. The second staff is a bass clef with a simple accompaniment. The third and fourth staves are treble clefs with melodic lines. The fifth staff is a bass clef with a melodic line. The sixth and seventh staves are bass clefs with simple accompaniment. The music is written in a historical style with various note values and rests.

Handwritten musical score for the second system, continuing from the first. It also consists of seven staves. The notation is similar to the first system. In the fifth staff, there are performance instructions: "arco" and "pizz" (pizzicato). The music continues with various rhythmic patterns and rests.

13

Handwritten musical score for system 13. It consists of nine staves. The top two staves are treble clefs, and the bottom two are bass clefs. The middle five staves are for piano accompaniment. The notation includes various note values, rests, and dynamic markings such as *p* and *f*. There are some corrections and annotations throughout the score.

14

Handwritten musical score for system 14. It consists of nine staves. The top two staves are treble clefs, and the bottom two are bass clefs. The middle five staves are for piano accompaniment. The notation includes various note values, rests, and dynamic markings. A large handwritten signature "Alexandre Levy" is written across the middle staves. Below the signature, the text "S. Paulo" and "1890" are visible. There are also some other markings and annotations.

Alexandre Levy
S. Paulo

