

11

Scherzo - Valse

P  
Tercio piano a 4/4

Tema as concebido todas de  
Silva Valse Joppin

A. L. Lacey

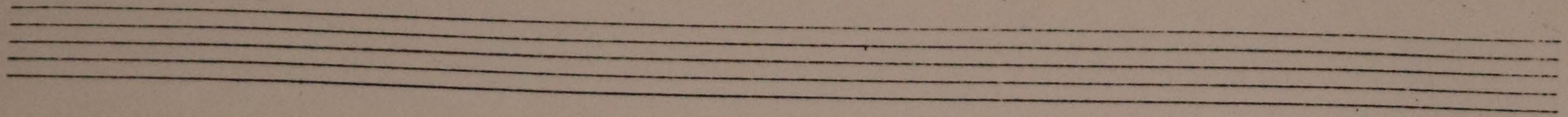
(April 1855)

(copy)

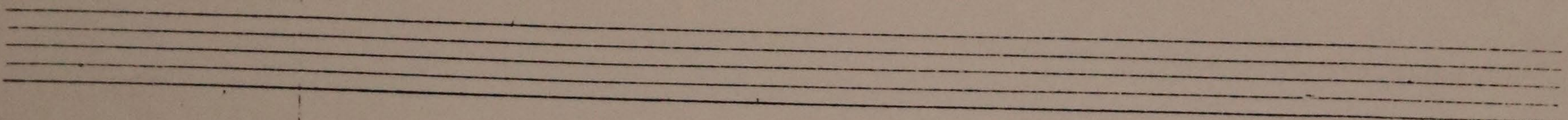


Quasi Largo

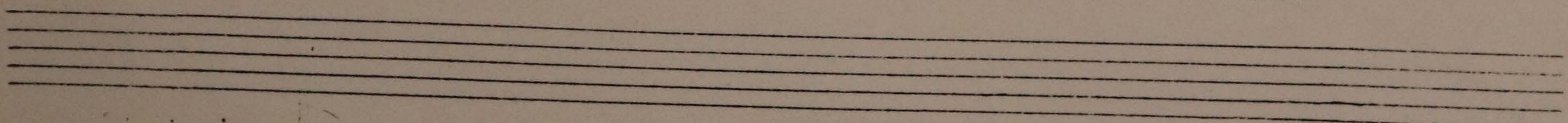
Handwritten musical notation for the first system, featuring a grand staff with treble and bass clefs, a key signature of three flats, and a 6/4 time signature. The music consists of several measures with various note values and rests.



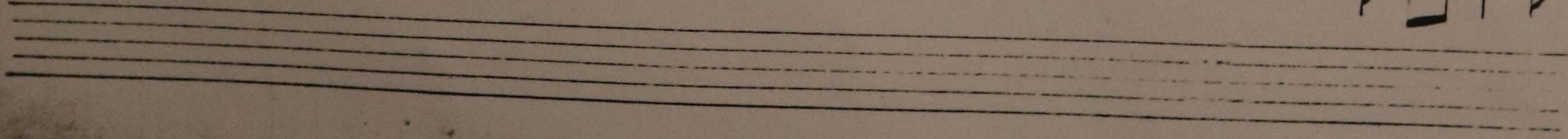
Handwritten musical notation for the second system, continuing the piece with similar notation and a key signature of three flats.



Handwritten musical notation for the third system, including a red correction mark in the bass staff.



Handwritten musical notation for the fourth system, featuring a double bar line and a key signature change to two flats.





*Molto Moderato*  
(Quasi Lurgo)

2  
H. Levy

The first system of handwritten musical notation consists of two staves. The upper staff is in treble clef and the lower in bass clef. The key signature has three flats (B-flat, E-flat, A-flat) and the time signature is 6/8. The music begins with a half rest in the upper staff and a quarter rest in the lower staff. The upper staff contains a melodic line with eighth and quarter notes, while the lower staff provides a harmonic accompaniment with eighth and quarter notes.

The second system continues the musical piece. It features similar notation to the first system, with a treble and bass staff. The melodic line in the upper staff shows some grace notes and slurs. The accompaniment in the lower staff continues with rhythmic patterns of eighth and quarter notes.

The third system of notation includes a red '4' written above a note in the upper staff. In the lower staff, there is a vocal marking 'la' written below a note. The musical notation continues with eighth and quarter notes in both staves.

The fourth system begins with a double bar line, indicating a section change. The key signature changes to two flats (B-flat, E-flat). The notation continues with eighth and quarter notes in both the treble and bass staves.







Call Me

The first system of handwritten musical notation for 'Call Me'. It consists of two staves. The upper staff is in treble clef with a key signature of two flats (B-flat and E-flat). It begins with a whole note chord, followed by a series of eighth and sixteenth notes. The lower staff is in bass clef with a key signature of two flats. It features a steady eighth-note accompaniment. A double bar line is present after the first measure of each staff.

The second system of handwritten musical notation. The upper staff continues the melody with various note values and rests. The lower staff provides a consistent harmonic accompaniment. A double bar line is present after the second measure of each staff.

The third system of handwritten musical notation. The upper staff shows a more active melodic line with many beamed notes. The lower staff continues the accompaniment. A double bar line is present after the second measure of each staff.

The fourth system of handwritten musical notation. The upper staff continues the melodic development. The lower staff maintains the accompaniment. A double bar line is present after the second measure of each staff.

The fifth system of handwritten musical notation, which is shorter than the previous ones. It consists of two staves. The upper staff has a few notes with a sharp sign, and the lower staff has a few notes. The system concludes with a double bar line.



Handwritten musical notation for the first system, consisting of a treble staff and a bass staff. The treble staff begins with a treble clef and a key signature of one flat (B-flat). The music includes quarter notes, eighth notes, and sixteenth notes, with some notes beamed together. The bass staff contains mostly quarter and eighth notes. The system concludes with a double bar line.

Handwritten musical notation for the second system, continuing the piece. It features a treble staff and a bass staff with similar rhythmic patterns and note values as the first system. The notation includes various rests and note groupings.

Handwritten musical notation for the third system. This system introduces more complex rhythmic structures, including sixteenth and thirty-second notes, and some beamed sixteenth notes. The treble staff shows a more active melodic line compared to the previous systems.

Handwritten musical notation for the fourth system. This system features a variety of note values, including quarter, eighth, and sixteenth notes, along with rests. The notation is dense and includes some slurs and ties.

Handwritten musical notation for the fifth system, which appears to be a concluding or transitional passage. It features a treble staff and a bass staff with fewer notes than the previous systems, including some rests and a final cadence.



Handwritten musical notation system 1, consisting of two staves. The first staff begins with a treble clef and a key signature of one flat (B-flat). The first few measures are crossed out with red diagonal lines. The second staff contains a bass clef and a key signature of one flat. A red sharp sign (#) is written below the second staff in the fourth measure.

Handwritten musical notation system 2, consisting of two staves. The first staff begins with a treble clef and a key signature of one flat. The second staff contains a bass clef and a key signature of one flat. A red sharp sign (#) is written below the second staff in the third measure. The word "la" is written in red ink at the end of the first staff.

Handwritten musical notation system 3, consisting of two staves. The first staff begins with a treble clef and a key signature of one flat. The second staff contains a bass clef and a key signature of one flat. A red sharp sign (#) is written below the second staff in the fourth measure. The word "re" is written in red ink above the first staff in the second measure.

Handwritten musical notation system 4, consisting of two staves. The first staff begins with a treble clef and a key signature of one flat. The second staff contains a bass clef and a key signature of one flat.



Handwritten musical notation system 1, featuring a treble and bass staff. The first two measures are crossed out with a large red 'X'. The notation includes various note values, rests, and accidentals.

Two empty musical staves, one treble and one bass, positioned below the first system.

Handwritten musical notation system 2, featuring a treble and bass staff. A large slur covers the first measure. The notation includes various note values, rests, and accidentals.

Two empty musical staves, one treble and one bass, positioned below the second system.

Handwritten musical notation system 3, featuring a treble and bass staff. A large slur covers the first measure. The notation includes various note values, rests, and accidentals.

Two empty musical staves, one treble and one bass, positioned below the third system.

Handwritten musical notation system 4, featuring a treble and bass staff. A large slur covers the first measure. The notation includes various note values, rests, and accidentals.

Two empty musical staves, one treble and one bass, positioned below the fourth system.



22

Handwritten musical notation for the first system, consisting of two staves with treble and bass clefs, a key signature of two flats, and various rhythmic values.

Two empty musical staves.

Handwritten musical notation for the second system, featuring a slur over the top staff and the word "legatissimo" written in the left margin.

Two empty musical staves.

Handwritten musical notation for the third system, consisting of two staves with treble and bass clefs, a key signature of two flats, and various rhythmic values.

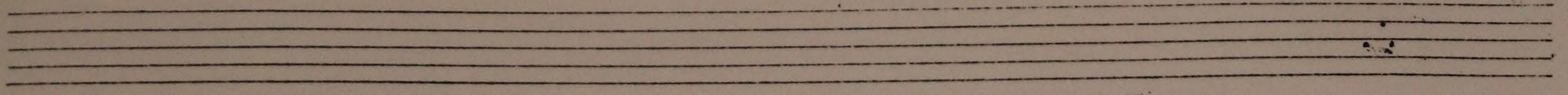
Two empty musical staves.

Handwritten musical notation for the fourth system, consisting of two staves with treble and bass clefs, a key signature of two flats, and various rhythmic values.

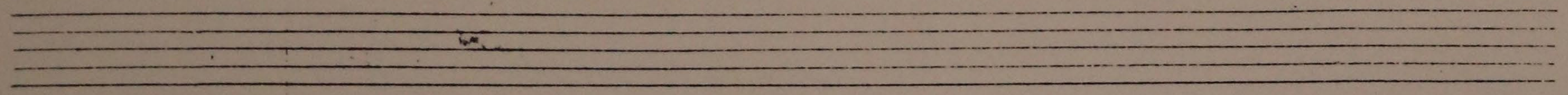
Handwritten musical notation for the fifth system, consisting of two staves with treble and bass clefs, a key signature of two flats, and various rhythmic values.



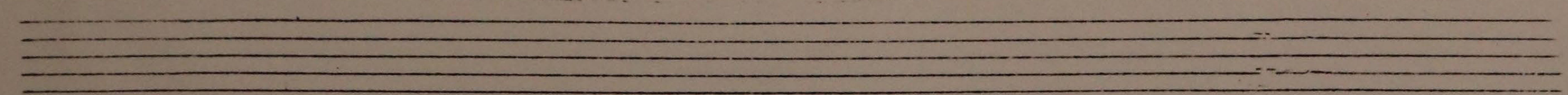
Handwritten musical notation for the first system. It consists of two staves: a treble staff and a bass staff. The treble staff begins with a treble clef and a key signature of two flats (B-flat and E-flat). The melody starts with a quarter note G4, followed by quarter notes A4, B4, and C5. There are several rests and other notes throughout the system. The bass staff begins with a bass clef and a key signature of two flats. It contains mostly whole and half notes, with some rests. A double bar line is present in the middle of the system.



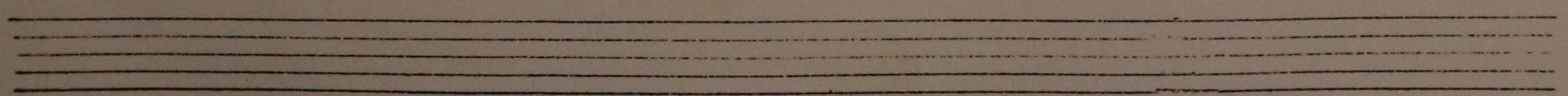
Handwritten musical notation for the second system. It consists of two staves: a treble staff and a bass staff. The treble staff begins with a treble clef and a key signature of two flats. The melody continues with quarter notes and rests. The bass staff continues with whole and half notes. A double bar line is present in the middle of the system.



Handwritten musical notation for the third system. It consists of two staves: a treble staff and a bass staff. The treble staff contains mostly whole notes and rests. The bass staff contains mostly whole notes. A double bar line is present in the middle of the system.



Handwritten musical notation for the fourth system. It consists of two staves: a treble staff and a bass staff. The treble staff begins with a treble clef and a key signature of two flats. The melody includes quarter notes and rests. The bass staff begins with a bass clef and a key signature of two flats. It contains mostly quarter notes. A double bar line is present in the middle of the system.





Handwritten musical notation on a system of two staves. The first measure is crossed out with a large red 'X'. The notation includes treble and bass clefs, a key signature of two flats, and various rhythmic values such as eighth and sixteenth notes.

Handwritten musical notation on a system of two staves. The notation includes treble and bass clefs, a key signature of two flats, and various rhythmic values such as eighth and sixteenth notes.

Handwritten musical notation on a system of two staves. The notation includes treble and bass clefs, a key signature of two flats, and various rhythmic values such as eighth and sixteenth notes. Red markings are present below the notes, including a red cross and a red '4'.

Handwritten musical notation on a system of two staves. The notation includes treble and bass clefs, a key signature of two flats, and various rhythmic values such as eighth and sixteenth notes. The right side of the system is crossed out with a large red 'X'.



Handwritten musical notation for the first system, featuring a grand staff with treble and bass clefs, a key signature of two flats, and a 3/4 time signature. The music consists of several measures with eighth and sixteenth notes in the treble and bass staves.

A set of five empty musical staves.

Handwritten musical notation for the second system, featuring a grand staff with treble and bass clefs, a key signature of two flats, and a 3/4 time signature. The music includes a double bar line and a fermata over a note in the treble staff.

A set of five empty musical staves.

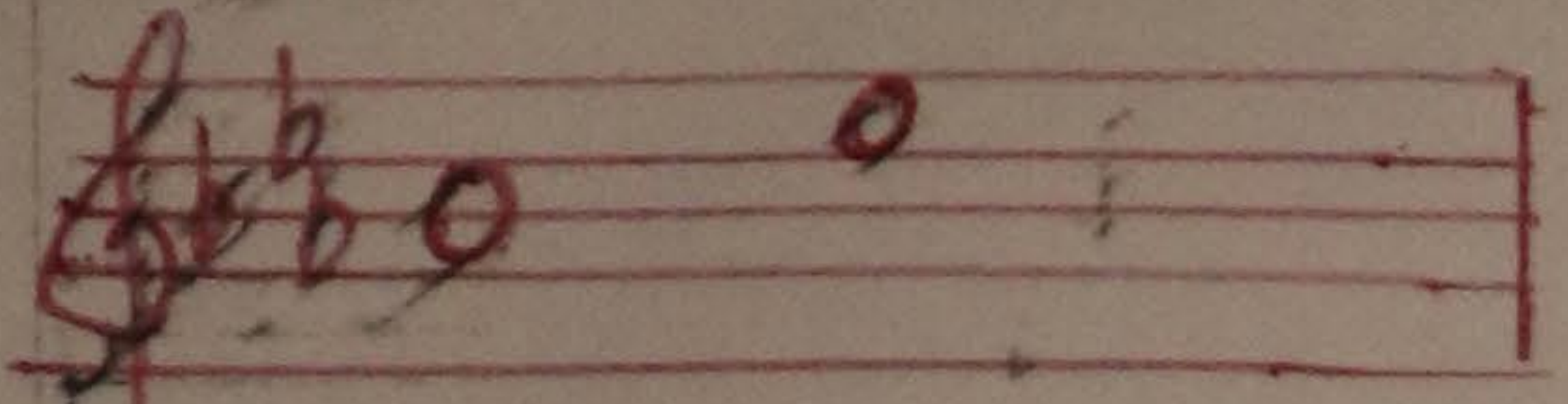
Handwritten musical notation for the third system, featuring a grand staff with treble and bass clefs, a key signature of two flats, and a 3/4 time signature. The music consists of several measures with half notes in the treble and bass staves.

A set of five empty musical staves.

Handwritten musical notation for the fourth system, featuring a grand staff with treble and bass clefs, a key signature of two flats, and a 3/4 time signature. The music includes a double bar line and a fermata over a note in the treble staff.

A set of five empty musical staves.





esquerda

Handwritten musical notation for the first system, consisting of two staves. The top staff contains several whole notes, and the bottom staff contains rests. The time signature is 6/4.

Handwritten musical notation for the second system, consisting of two staves with eighth and sixteenth notes.

Handwritten musical notation for the third system, consisting of two staves with eighth and sixteenth notes.

Handwritten musical notation for the fourth system, consisting of two staves with eighth and sixteenth notes. Includes red ink annotations: a circled 'b' with a slash, a circled 'a' with a slash, and the text 'sub lab' written below the staff.



Handwritten musical notation for the first system. The treble staff has a key signature of two flats and contains a melodic line with a slur over the first two measures. The bass staff has a key signature of two flats and contains a bass line with quarter notes.

Handwritten musical notation for the second system, similar to the first system, with treble and bass staves in two flats.

Handwritten musical notation for the third system. The treble staff has a key signature of two flats and contains a melodic line with a slur and a double bar line. The bass staff has a key signature of two flats and contains a bass line with quarter notes and a double bar line.

Handwritten musical notation for the fourth system. The treble staff has a key signature of two flats and contains a melodic line with a slur and a double bar line. The bass staff has a key signature of two flats and contains a bass line with quarter notes and a double bar line.



Handwritten musical notation for the first system, consisting of a treble staff and a bass staff. The treble staff contains a melodic line with eighth and sixteenth notes, while the bass staff provides a harmonic accompaniment with chords and single notes.

Handwritten musical notation for the second system. It includes red annotations: 'Re' with an arrow pointing to a note in the bass staff, and 'sib' with an arrow pointing to a note in the treble staff.

Handwritten musical notation for the third system. A red annotation 'sib' is written at the beginning of the bass staff, pointing to a note.

Handwritten musical notation for the fourth system. It features a separate staff at the bottom right, possibly representing a continuation or a specific variation of the main piece.



N. 15.

Handwritten musical notation, first system. It consists of two staves. The upper staff is in treble clef with a key signature of two flats (B-flat and E-flat). The lower staff is in bass clef with the same key signature. The music features a variety of note values including quarter, eighth, and sixteenth notes, along with rests and slurs.

Handwritten musical notation, second system. It consists of two staves. The upper staff is in treble clef with a key signature of two flats. The lower staff is in bass clef with the same key signature. The music continues with similar note values and includes some triplet markings.

Handwritten musical notation, third system. It consists of two staves. The upper staff is in treble clef with a key signature of two flats. The lower staff is in bass clef with the same key signature. The music continues with similar note values and includes some triplet markings.

Handwritten musical notation, fourth system. It consists of two staves. The upper staff is in treble clef with a key signature of two flats. The lower staff is in bass clef with the same key signature. The music continues with similar note values and includes some triplet markings.

Handwritten musical notation, fifth system. It consists of two staves. The upper staff is in treble clef with a key signature of two flats. The lower staff is in bass clef with the same key signature. The music continues with similar note values and includes some triplet markings.



Handwritten musical notation system 1, featuring a grand staff with treble and bass clefs. The notation is crossed out with a large red 'X'.

Empty musical staves.

Handwritten musical notation system 2, featuring a grand staff with treble and bass clefs.

Empty musical staves.

Handwritten musical notation system 3, featuring a grand staff with treble and bass clefs.

Empty musical staves.

Handwritten musical notation system 4, featuring a grand staff with treble and bass clefs.

Empty musical staves.



Handwritten musical notation system 1, featuring a treble and bass staff with a grand staff brace. The music includes various notes, rests, and accidentals. A large red 'X' is drawn over the first few measures. A small 'Phi' symbol is written below the bass staff.

Handwritten musical notation system 2, featuring a treble and bass staff with a grand staff brace. The music includes various notes, rests, and accidentals.

Handwritten musical notation system 3, featuring a treble and bass staff with a grand staff brace. The music includes various notes, rests, and accidentals.

Handwritten musical notation system 4, featuring a treble and bass staff with a grand staff brace. The music includes various notes, rests, and accidentals.

Handwritten musical notation system 5, featuring a treble and bass staff with a grand staff brace. The music includes various notes, rests, and accidentals.



Handwritten musical notation system 1, consisting of two staves. The top staff features a treble clef, a key signature of two flats (B-flat and E-flat), and a 2/4 time signature. It begins with a series of chords and notes, including a whole note chord with a fermata. A dashed rectangular box encloses the first five measures. The bottom staff contains a bass line with notes and rests.

Two empty musical staves, one above the other, consisting of five lines each.

Handwritten musical notation system 2, consisting of two staves. The top staff features a treble clef, a key signature of two flats, and a 2/4 time signature. It contains several measures of music with notes and rests. The bottom staff contains a bass line with notes and rests.

Two empty musical staves, one above the other, consisting of five lines each.

Handwritten musical notation system 3, consisting of two staves. The top staff features a treble clef, a key signature of two flats, and a 2/4 time signature. It contains several measures of music with notes and rests. The bottom staff contains a bass line with notes and rests, including some notes highlighted in red.

Two empty musical staves, one above the other, consisting of five lines each.

Handwritten musical notation system 4, consisting of two staves. The top staff features a treble clef, a key signature of two flats, and a 2/4 time signature. It contains several measures of music with notes and rests. The bottom staff contains a bass line with notes and rests, including some notes highlighted in red.

Two empty musical staves, one above the other, consisting of five lines each.



Handwritten musical notation system 1, consisting of two staves. The top staff is in treble clef and the bottom staff is in bass clef. The music is in G major (one sharp). The first two measures are crossed out with red lines. The notation includes various note values, rests, and accidentals.

Handwritten musical notation system 2, consisting of two staves. The top staff is in treble clef and the bottom staff is in bass clef. The music is in G major. The notation includes various note values, rests, and accidentals. There are some red markings above the top staff.

Handwritten musical notation system 3, consisting of two staves. The top staff is in treble clef and the bottom staff is in bass clef. The music is in G major. The notation includes various note values, rests, and accidentals. There are some red markings on the bottom staff.

Handwritten musical notation system 4, consisting of two staves. The top staff is in treble clef and the bottom staff is in bass clef. The music is in G major. The notation includes various note values, rests, and accidentals. There are some red markings on the bottom staff.



Handwritten musical notation for the first system, consisting of two staves. The notation includes various notes, rests, and accidentals, with some notes marked with a sharp sign (#).

Handwritten musical notation for the second system, featuring a double bar line. There are some red markings and annotations, including a red 'X' and a red '8'.

Handwritten musical notation for the third system, showing a continuation of the musical piece with various notes and rests.

Handwritten musical notation for the fourth system, including the word "Tercio" written in the music. The notation includes various notes and rests.



Handwritten musical notation system 1, consisting of two staves. The top staff features a treble clef, a key signature of two sharps (F# and C#), and a common time signature (C). The melody is composed of eighth and sixteenth notes. The bottom staff features a bass clef and contains a bass line with eighth and sixteenth notes, some of which are marked with red dots.

Handwritten musical notation system 2, consisting of two staves. The top staff features a treble clef, a key signature of two sharps, and a common time signature. It includes a melodic line with some rests and a section with a thick black line. The bottom staff features a bass clef and contains a bass line with eighth and sixteenth notes.

Handwritten musical notation system 3, consisting of two staves. The top staff features a treble clef, a key signature of two sharps, and a common time signature. It contains several measures with chords and rests. The bottom staff features a bass clef and contains a bass line with eighth and sixteenth notes.

Handwritten musical notation system 4, consisting of two staves. The top staff features a treble clef, a key signature of two sharps, and a common time signature. It contains a melodic line with eighth and sixteenth notes. The bottom staff features a bass clef and contains a bass line with eighth and sixteenth notes.



lob sib do  
fa miu lab

lab sib do  
fa# miu lab



Handwritten musical notation on a grand staff. The upper staff contains a melodic line with various note values and rests. The lower staff contains a bass line with some notes marked with a 'p' (piano) dynamic. There are some ink smudges on the paper.

Handwritten musical notation on a grand staff. The upper staff continues the melodic line from the previous system. The lower staff continues the bass line. A treble clef is visible on the lower staff in the second measure, suggesting a change in the instrument or a specific part of the piece. There are some ink smudges on the paper.

Handwritten musical notation on a grand staff. The upper staff features several measures with a red '4' written above the notes, possibly indicating a measure rest or a specific rhythmic value. The lower staff continues the bass line. There are some ink smudges on the paper.

Handwritten musical notation on a grand staff. The upper staff contains a complex melodic line with many notes and rests. The lower staff contains a bass line with some notes marked with a 'p' (piano) dynamic. There are some ink smudges on the paper.



Handwritten musical notation for the first system. It consists of two staves: a treble staff and a bass staff. The treble staff begins with a treble clef and a key signature of three flats (B-flat, E-flat, A-flat). The bass staff begins with a bass clef and the same key signature. The notation includes various note values, rests, and a red treble clef symbol on the second staff.

Handwritten musical notation for the second system, consisting of two staves (treble and bass) with musical notes and rests.

Handwritten musical notation for the third system, consisting of two staves (treble and bass) with musical notes and rests.

Handwritten musical notation for the fourth system, consisting of two staves (treble and bass). This system includes red annotations: a red 'Reb' above a note in the treble staff and red 'bd' below notes in the bass staff.



Handwritten musical notation system 1, consisting of two staves. The top staff contains a melodic line with various notes and accidentals. The bottom staff contains a bass line with notes and rests. A red '4' is written in the first measure of the top staff, and a red 'Dó' is written below the second measure of the top staff.

Handwritten musical notation system 2, consisting of two staves. The top staff contains a melodic line with notes and rests. The bottom staff contains a bass line with notes and rests. Red '4' markings are present in the first, second, and fifth measures of the top staff.

Handwritten musical notation system 3, consisting of two staves. The top staff contains a melodic line with notes and rests. The bottom staff contains a bass line with notes and rests. A red '4' is written in the first measure of the top staff, and red '6 7 6 6' is written in the fourth measure of the top staff.

Handwritten musical notation system 4, consisting of two staves. The top staff contains a melodic line with notes and rests. The bottom staff contains a bass line with notes and rests. Red '6 7 6 6' is written in the fourth measure of the top staff, and a red '4' is written in the fifth measure of the top staff.



Handwritten musical notation on a grand staff. The upper staff contains several measures of music with notes and rests. Above the first few measures are some faint, possibly illegible markings. The lower staff contains a few notes and rests. A red '4' is written above a measure in the lower staff.

Handwritten musical notation on a grand staff. The upper staff contains several measures of music with notes and rests. Above the last few measures are some markings, including a red '4'. The lower staff contains several measures of music with notes and rests. A red '4' is written above a measure in the lower staff.

Handwritten musical notation on a grand staff. The upper staff contains several measures of music with notes and rests. Above the first few measures are some markings, including a red '4'. The lower staff contains several measures of music with notes and rests. A red '4' is written above a measure in the lower staff.

Handwritten musical notation on a grand staff. The upper staff contains several measures of music with notes and rests. Above the first few measures are some markings, including a red 'DO'. The lower staff contains several measures of music with notes and rests. A large red 'X' is drawn over the final two measures of the lower staff.



N.º 27

→ correção segundo o 1º manuscrito de Bay



*And. sempre  
in compasso*

*Presto*

TA

M

LA



Handwritten musical notation on a grand staff. The first system is crossed out with red lines. A red circle highlights a measure in the upper staff. A red 'b' is written above a note in the upper staff. A red '8' is written above a measure in the lower staff, with a dashed line extending to the right. The word 'basso' is written in red below the lower staff.

Handwritten musical notation on a grand staff. The system begins with a 3/4 time signature. The notation includes various notes and rests across both staves.

Handwritten musical notation on a grand staff. The system contains several measures of music with notes and rests.

Handwritten musical notation on a grand staff. The system contains several measures of music. Red annotations include a red '8' below the lower staff, a red '10' below the lower staff, and a red '11' below the lower staff.



Handwritten musical notation system 1, consisting of two staves. The top staff begins with a treble clef, a key signature of two flats (B-flat and E-flat), and a common time signature. It contains a sequence of chords and notes, with an '8' marking above the first measure. The bottom staff continues the harmonic accompaniment. The system concludes with a double bar line and a 3/4 time signature.

Handwritten musical notation system 2, consisting of two staves. The top staff features a treble clef, a key signature of two flats, and a common time signature. It contains a sequence of chords and notes. The bottom staff provides the harmonic accompaniment. The system ends with a double bar line.

Handwritten musical notation system 3, consisting of two staves. The top staff begins with a treble clef, a key signature of two flats, and a common time signature. It contains a sequence of chords and notes, with an '8' marking above the first measure. The bottom staff continues the harmonic accompaniment. The system ends with a double bar line.

Handwritten musical notation system 4, consisting of two staves. The top staff features a treble clef, a key signature of two flats, and a common time signature. It contains a sequence of chords and notes, with an '8' marking above the first measure. The bottom staff provides the harmonic accompaniment. The system ends with a double bar line.

Handwritten musical notation system 5, consisting of two staves. The top staff features a treble clef, a key signature of two flats, and a common time signature. It contains a sequence of chords and notes. The bottom staff provides the harmonic accompaniment. The system ends with a double bar line.



Handwritten musical notation for the first system, featuring a grand staff with treble and bass clefs, a key signature of two flats, and a 3/4 time signature. The music consists of several measures of chords and single notes.

Handwritten musical notation for the second system, continuing the piece with similar notation and some dynamic markings.

Handwritten musical notation for the third system, showing more complex chordal structures and some ink smudges.

Handwritten musical notation for the fourth system, concluding the piece with a "Fine" marking and a decorative flourish.



Handwritten musical notation on a grand staff. The first two measures are crossed out with red lines. The notation includes treble and bass clefs, a key signature of two flats (B-flat and E-flat), and various musical symbols such as notes, rests, and accidentals.

Handwritten musical notation on a grand staff. The notation includes treble and bass clefs, a key signature of two flats, and musical symbols such as notes, rests, and accidentals. A dashed line above the staff indicates a slur or continuation.

Handwritten musical notation on a grand staff. The notation includes treble and bass clefs, a key signature of two flats, and musical symbols such as notes, rests, and accidentals. A dashed line above the staff indicates a slur or continuation.

Handwritten musical notation on a grand staff. The notation includes treble and bass clefs, a key signature of two flats, and musical symbols such as notes, rests, and accidentals. A dashed line above the staff indicates a slur or continuation.

ALOIZ LEOLUCA (CIPISTA)