

Obertura Dramatica

para Orquestra

por Albino Levy

Executada pela 1ª vez em

no Club Bayden

de S. Paulo

de S. Paulo

Harpa

Harpa

Harpa

Obertura Dramatica

Obertura

Obertura Dramatica

- 2 Flautas
- 2 Oboes
- 2 Clarinettes
- 2 Fagoltes
- 3 Trompas
- 2 Pistas
- 3 Trombones

Tamp<sup>co</sup> 11

para grande Orquestra

Obertura Dramatica

|||

- 6 Violinas 1<sup>o</sup>
- " 2<sup>o</sup>
- Violas
- Cellos
- Contrabaços
- Tímpani
- Bombo

Violinos

Fagoltes

Handwritten musical notation on staves. The top staff shows a series of slanted lines, likely representing a rhythmic pattern for the Violinos. Below it, there are some notes and rests for the Fagoltes.

I

II

Overture - Dramatic

*Adagio Molto*

I

II

Handwritten musical score for the first system, consisting of four staves. The notation is dense, featuring numerous triplets (marked with '3') and long, sweeping slurs that span across multiple staves. The key signature has two flats, and the time signature is 3/4. The music is written in a cursive, historical style.

Handwritten musical score for the second system, also consisting of four staves. This system includes dynamic markings such as *pp* (pianissimo) and *pizzicato*. The notation continues with complex rhythmic patterns and slurs. The key signature remains two flats, and the time signature is 3/4.

Handwritten musical score for the third system, consisting of four staves. The system concludes with a double bar line and the word *Fine* written in large, decorative letters. The notation includes various rhythmic figures and slurs. The key signature is two flats, and the time signature is 3/4.

*all<sup>o</sup> molto. Vivace*

3

The first system consists of four staves. The top staff is in treble clef with a key signature of three flats (B-flat, E-flat, A-flat) and a common time signature. It contains several measures of music, including a sixteenth-note run. The second staff is also in treble clef and contains a few notes and rests. The third staff is in bass clef and features a dense sixteenth-note texture. The fourth staff is in bass clef and contains a few notes and rests. There are some handwritten annotations and a small '3' at the end of the system.

The second system consists of two staves, both in treble clef with a key signature of three flats. The entire system is heavily crossed out with diagonal lines, indicating that the music was either cancelled or is a study sketch. There are some faint notes and markings visible through the lines.

The third system consists of four staves. The top staff is in treble clef with a key signature of three flats and a common time signature. It contains several measures of music with many notes and rests. The second staff is in bass clef and contains a few notes and rests. The third staff is in bass clef and contains a few notes and rests. The fourth staff is in bass clef and contains a few notes and rests. There are some handwritten annotations and a small '3' at the end of the system.

Handwritten musical notation on a grand staff. The music is in a key with two flats and a common time signature. It features a melodic line in the treble clef and a more rhythmic accompaniment in the bass clef. There are some corrections and scribbles over the notes.

Handwritten musical notation on a grand staff. The music continues from the previous system. The treble clef part has a more active melodic line with some grace notes. The bass clef part provides harmonic support with chords and moving lines.

Handwritten musical notation on a grand staff. This system shows a significant amount of scribbling and correction in the treble clef part, particularly in the first few measures. The bass clef part remains clear and continues the harmonic progression.

Handwritten musical notation on a grand staff. The music is in a key with two flats and a common time signature. The notation is relatively clear, showing a melodic line in the treble clef and a bass line in the bass clef. There are some markings like "com 8" and "+" signs.

Handwritten musical notation on a grand staff. The music continues with a melodic line in the treble clef and a bass line in the bass clef. There are some markings like "all" and "+" signs.

Handwritten musical notation on a grand staff. The upper staff uses a treble clef and the lower staff uses a bass clef. The key signature consists of two flats (B-flat and E-flat). The time signature is common time (C). The notation includes various note values, rests, and dynamic markings.

Handwritten musical notation on a grand staff, continuing from the previous system. The upper staff uses a treble clef and the lower staff uses a bass clef. The notation is dense with notes and includes some scribbled-out or heavily crossed-out sections.

Handwritten musical notation on a grand staff. The notation is somewhat sparse and includes various note values and rests. There are some annotations above the notes.

Handwritten musical notation on a grand staff. The notation is dense and includes various note values and rests. There are some annotations above the notes.

Handwritten musical notation on a grand staff. The notation is dense and includes various note values and rests. There are some annotations above the notes.

b

Handwritten musical notation, first system. Treble clef, key signature of three flats (B-flat, E-flat, A-flat). The notation includes a melodic line with a slur and a piano accompaniment with chords and some rhythmic markings.

Handwritten musical notation, second system. Treble clef, key signature of three flats. The notation includes a melodic line with a slur and a piano accompaniment with chords and some rhythmic markings.

Handwritten musical notation, third system. Treble clef, key signature of three flats. The notation includes a melodic line with a slur and a piano accompaniment with chords and some rhythmic markings.

Handwritten musical notation, fourth system. Treble clef, key signature of three flats. The notation includes a melodic line with a slur and a piano accompaniment with chords and some rhythmic markings.

Handwritten musical notation, fifth system. Treble clef, key signature of three flats. The notation includes a melodic line with a slur and a piano accompaniment with chords and some rhythmic markings.



Handwritten musical notation, first system. Treble and bass clefs, key signature of three flats (B-flat, E-flat, A-flat). The notation includes various note values and rests.

Handwritten musical notation, second system. Treble and bass clefs, key signature of three flats. The notation includes various note values and rests.

Handwritten musical notation, third system. Treble and bass clefs, key signature of three flats. The notation includes various note values and rests, ending with a large scribble.

Handwritten musical notation, fourth system. Treble and bass clefs, key signature of three flats. The notation includes various note values and rests. The word "Corno" is written below the bass staff.

Handwritten musical notation, fifth system. Treble and bass clefs, key signature of three flats. The notation includes various note values and rests.

*sempre animando. più*

Handwritten musical notation for the first system, featuring a treble and bass clef with various notes and accidentals.

Handwritten musical notation for the second system, including a "Cresc." marking and a large slur over the bass line.

Handwritten musical notation for the third system, showing complex rhythmic patterns and a large slur.

Handwritten musical notation for the fourth system, starting with an "express." marking and a slur.

Handwritten musical notation for the fifth system, featuring dense chordal textures in both staves.

Handwritten musical notation on a grand staff. The top staff has a treble clef and the bottom staff has a bass clef. The key signature has two flats (B-flat and E-flat). The music consists of several measures with various note values, including quarter and eighth notes, and rests.

Handwritten musical notation on a grand staff. The top staff has a treble clef and the bottom staff has a bass clef. The key signature has two flats. The music includes various note values and rests, with some notes marked with 'p' for piano.

Handwritten musical notation on a grand staff. The top staff has a treble clef and the bottom staff has a bass clef. The key signature has two flats. The music includes various note values and rests, with some notes marked with 'p' for piano.

Handwritten musical notation on a grand staff. The top staff has a treble clef and the bottom staff has a bass clef. The key signature has two flats. The music includes various note values and rests, with some notes marked with 'p' for piano.

Handwritten musical notation on a grand staff. The top staff has a treble clef and the bottom staff has a bass clef. The key signature has two flats. The music includes various note values and rests, with some notes marked with 'p' for piano. There are blue scribbles over the bottom staff in the later measures.

Handwritten musical notation, first system. It consists of two staves. The upper staff is in treble clef with a key signature of three flats (B-flat, E-flat, A-flat). The lower staff is in bass clef with the same key signature. The music features a series of notes and rests, with some notes marked with 'b' for flat. The notation is somewhat sketchy and appears to be a working draft.

Handwritten musical notation, second system. It consists of two staves. The upper staff is in treble clef with a key signature of three flats. The lower staff is in bass clef with the same key signature. The music continues with notes and rests, showing some rhythmic patterns. There are some annotations above the notes, possibly indicating dynamics or phrasing.

Handwritten musical notation, third system. This system is heavily crossed out with multiple diagonal lines, indicating that the original notation was discarded or revised. The underlying notes and clefs are still visible through the ink.

Handwritten musical notation, fourth system. It consists of two staves. The upper staff is in treble clef with a key signature of three flats. The lower staff is in bass clef with the same key signature. The music continues with notes and rests, showing some rhythmic patterns. There are some annotations above the notes, possibly indicating dynamics or phrasing.

Handwritten musical notation, fifth system. It consists of two staves. The upper staff is in treble clef with a key signature of three flats. The lower staff is in bass clef with the same key signature. The music continues with notes and rests, showing some rhythmic patterns. There are some annotations above the notes, possibly indicating dynamics or phrasing.

4

Handwritten musical notation for the first system, featuring treble and bass staves with complex chordal structures and accidentals.

Handwritten musical notation for the second system, showing treble and bass staves with various rhythmic and harmonic elements.

Handwritten musical notation for the third system, including treble and bass staves with detailed chord progressions.

Handwritten musical notation for the fourth system, featuring treble and bass staves with intricate harmonic and melodic lines.

Handwritten musical notation for the fifth system, showing treble and bass staves with complex chordal and melodic structures.

Handwritten musical notation for the first system. The treble staff begins with a treble clef and a key signature of two flats (B-flat and E-flat). It contains several measures of music with notes, accidentals, and a fermata over a note. The bass staff contains corresponding bass notes and rests. The system concludes with a double bar line.

Handwritten musical notation for the second system. The treble staff continues with notes and accidentals. The bass staff shows a complex arrangement of notes and rests. The system ends with a double bar line.

Handwritten musical notation for the third system. The treble staff has notes and accidentals. The bass staff includes a marking "com 8" below it. The system concludes with a double bar line.

Handwritten musical notation for the fourth system. The treble staff contains notes and accidentals. The bass staff has notes and rests. The system ends with a double bar line.

Handwritten musical notation for the fifth system. The treble staff starts with a treble clef and a key signature of two flats. It contains notes and accidentals. The bass staff has notes and rests. The system concludes with a double bar line.

Handwritten musical notation on a grand staff. The upper staff is in treble clef and the lower staff is in bass clef. The key signature has two flats (B-flat and E-flat). The music consists of several measures with notes and rests. There are some markings above the notes, possibly indicating dynamics or articulation.

Handwritten musical notation on a grand staff. The upper staff is in treble clef and the lower staff is in bass clef. The key signature has two flats. The music continues with notes and rests. There are some markings above the notes, possibly indicating dynamics or articulation.

Handwritten musical notation on a grand staff. The upper staff is in treble clef and the lower staff is in bass clef. The key signature has two flats. The music continues with notes and rests. There are some markings above the notes, possibly indicating dynamics or articulation.

Handwritten musical notation on a grand staff. The upper staff is in treble clef and the lower staff is in bass clef. The key signature has two flats. The music continues with notes and rests. There are some markings above the notes, possibly indicating dynamics or articulation. There are some blue markings on the right side of the page.

Handwritten musical notation on a grand staff. The upper staff is in treble clef and the lower staff is in bass clef. The key signature has two flats. The music continues with notes and rests. There are some markings above the notes, possibly indicating dynamics or articulation. There are some blue markings on the right side of the page. The text "3 comp." is written above the music, and "Dim molto e unum." is written below the music. The signature "Corona Longo" is at the bottom right.

*Tempo di Andante*

Handwritten musical notation for the first system, featuring a treble and bass clef with various notes and rests.

Handwritten musical notation for the second system, including blue scribbles over the notes.

Handwritten musical notation for the third system, including blue scribbles over the notes.

Handwritten musical notation for the fourth system, including blue scribbles over the notes.

*Adagio Molto*

Handwritten musical notation for the fifth system, heavily obscured by a dense grid of black scribbles.

*Humana*



*Andante*

The first system of the handwritten musical score consists of two staves. The top staff is in treble clef and the bottom staff is in bass clef. Both staves are marked with a key signature of two flats (B-flat and E-flat). The music begins with a 5-measure rest in the treble staff, followed by a series of notes and rests. The bass staff contains chords and some melodic fragments. The tempo marking "Andante" is written above the first staff.

The second system continues the musical notation on two staves. The notation is somewhat sparse, with many notes and chords. The right end of the system is heavily scribbled out with dark ink, obscuring the final measures of the system.

The third system is characterized by extremely dense and overlapping scribbles in both the treble and bass staves, making the original notation almost completely illegible. The scribbles cover most of the staff space.

The fourth system also features dense scribbles, particularly in the treble staff, which obscure the underlying musical notation. Some notes and stems are still visible through the ink.

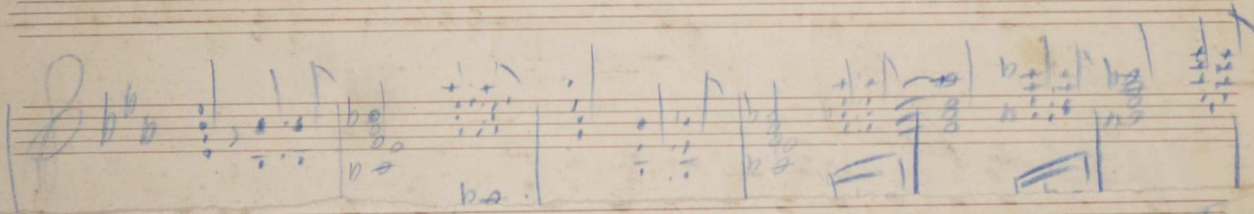
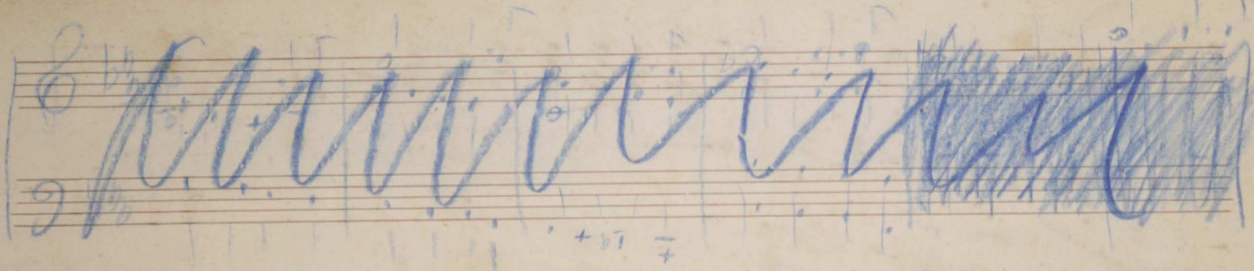
The fifth system shows clearer musical notation than the previous systems. It consists of two staves with notes, rests, and chords. The notation is more legible, though still somewhat messy and handwritten.

Handwritten musical score for the first system. It consists of three staves. The top two staves are in treble clef with a key signature of two flats (B-flat and E-flat). The bottom staff is in bass clef with the same key signature. The music includes various note values, rests, and dynamic markings such as *mf* and *ff*. There are also some handwritten annotations in blue ink, including a circled '2' and '4' in the middle staff.

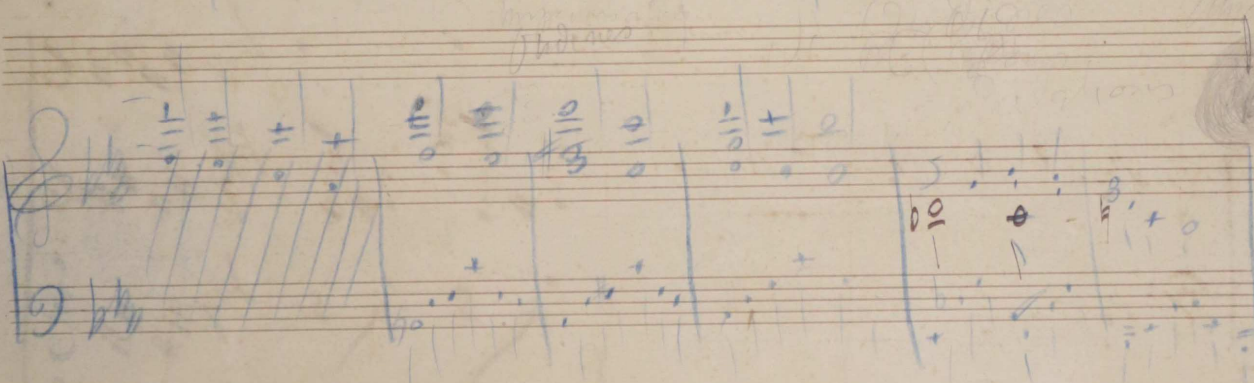
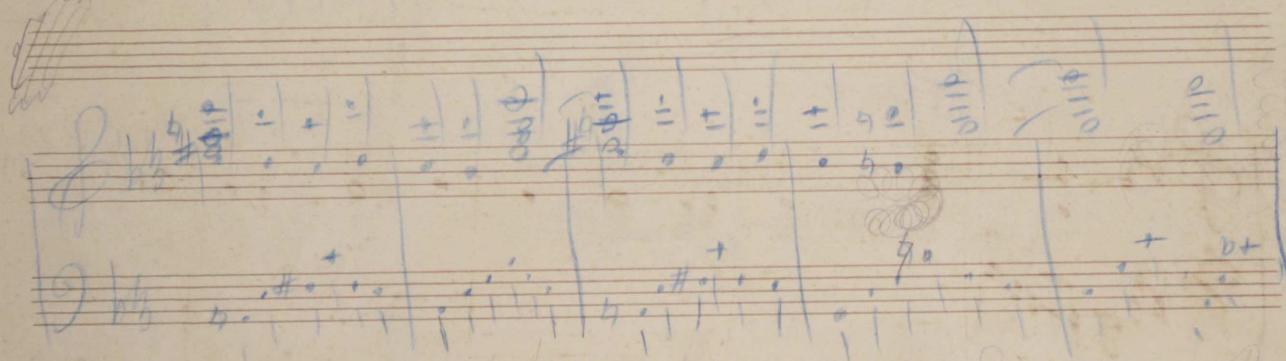
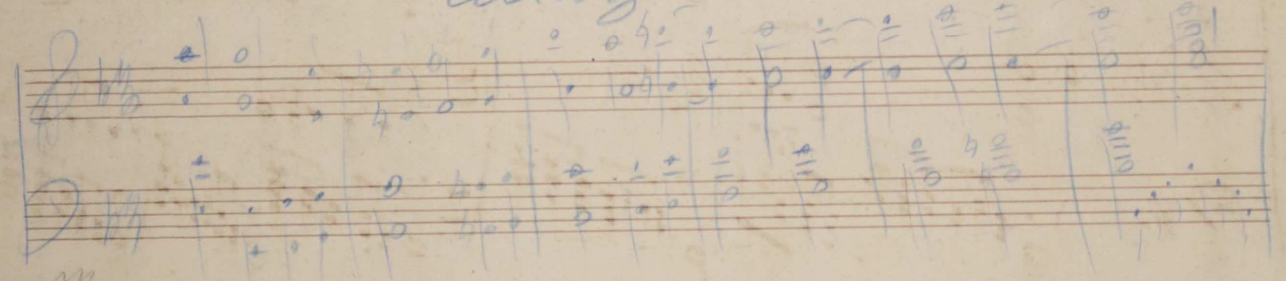
*meno mosso*

Handwritten musical score for the second system. It consists of two staves. The top staff is in treble clef and the bottom staff is in bass clef, both with a key signature of two flats. The music features a mix of note values and rests.

Handwritten musical score for the third system. It consists of two staves. The top staff is in treble clef and the bottom staff is in bass clef, both with a key signature of two flats. The music includes notes and rests. At the end of the system, there is a large, dense blue scribble that obscures the notation.



*allargando* *maestoso*



*Je suis de vous  
mon Dieu qui prie  
Vos*

14

Handwritten musical score for measures 14-16. It features three staves: two treble clefs and one bass clef. The music is in a key with two flats and a common time signature. The notation includes various note values, rests, and dynamic markings.

16

*Tempo All<sup>o</sup>*

Handwritten musical score for measures 17-18. It features two staves: one treble clef and one bass clef. The music is in a key with one flat and a common time signature. The notation includes various note values and rests.

Handwritten musical score for measures 19-20. It features two staves: one treble clef and one bass clef. The music is in a key with one flat and a common time signature. The notation includes various note values and rests.

Handwritten musical score for measures 21-23. It features three staves: two treble clefs and one bass clef. The music is in a key with three sharps and a common time signature. The notation includes various note values, rests, and dynamic markings.

Handwritten musical notation on a grand staff. The notation is heavily scribbled over with blue ink, obscuring the original notes and clefs. The staff appears to be in a key with two flats and a common time signature.

Handwritten musical notation on a grand staff. The notation is clear and shows a series of chords and melodic lines. The key signature has two flats, and the time signature is common time. The notation includes various accidentals and articulation marks.

Handwritten musical notation on a grand staff. The notation is clear and shows a series of chords and melodic lines. The key signature has two flats, and the time signature is common time. The notation includes various accidentals and articulation marks.

Handwritten musical notation on a grand staff. The notation is clear and shows a series of chords and melodic lines. The key signature has two flats, and the time signature is common time. The notation includes various accidentals and articulation marks.

Handwritten musical notation on a grand staff. The notation is clear and shows a series of chords and melodic lines. The key signature has two flats, and the time signature is common time. The notation includes various accidentals and articulation marks.

Nada como Junho o mais histonico. Sua letra!

8-7

*Quasi adagio*

*molto*

*Andte Quasi Recit.*

*ben express*

*Lento*

*Lento*

*Lento*